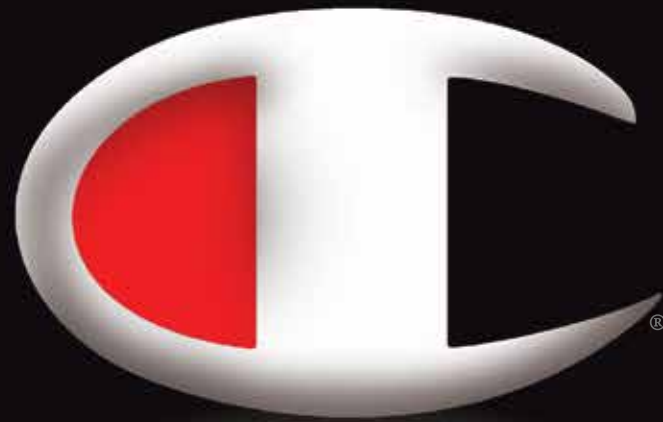
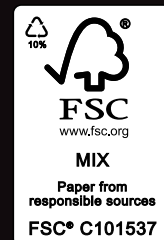


Champion®

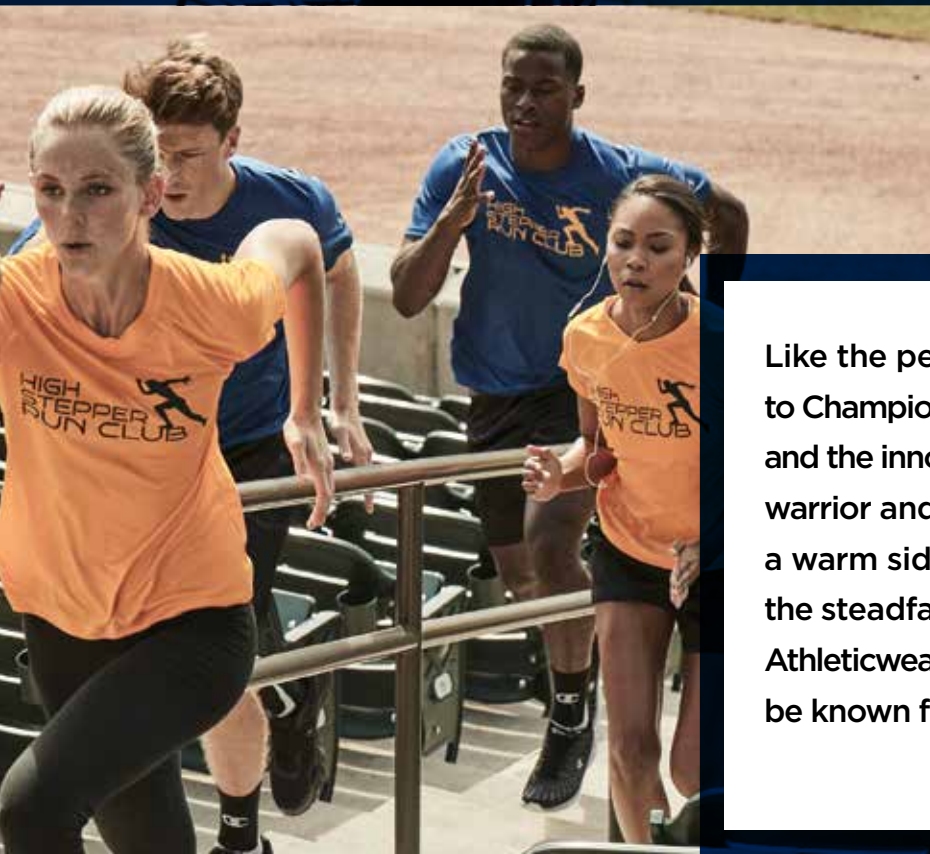
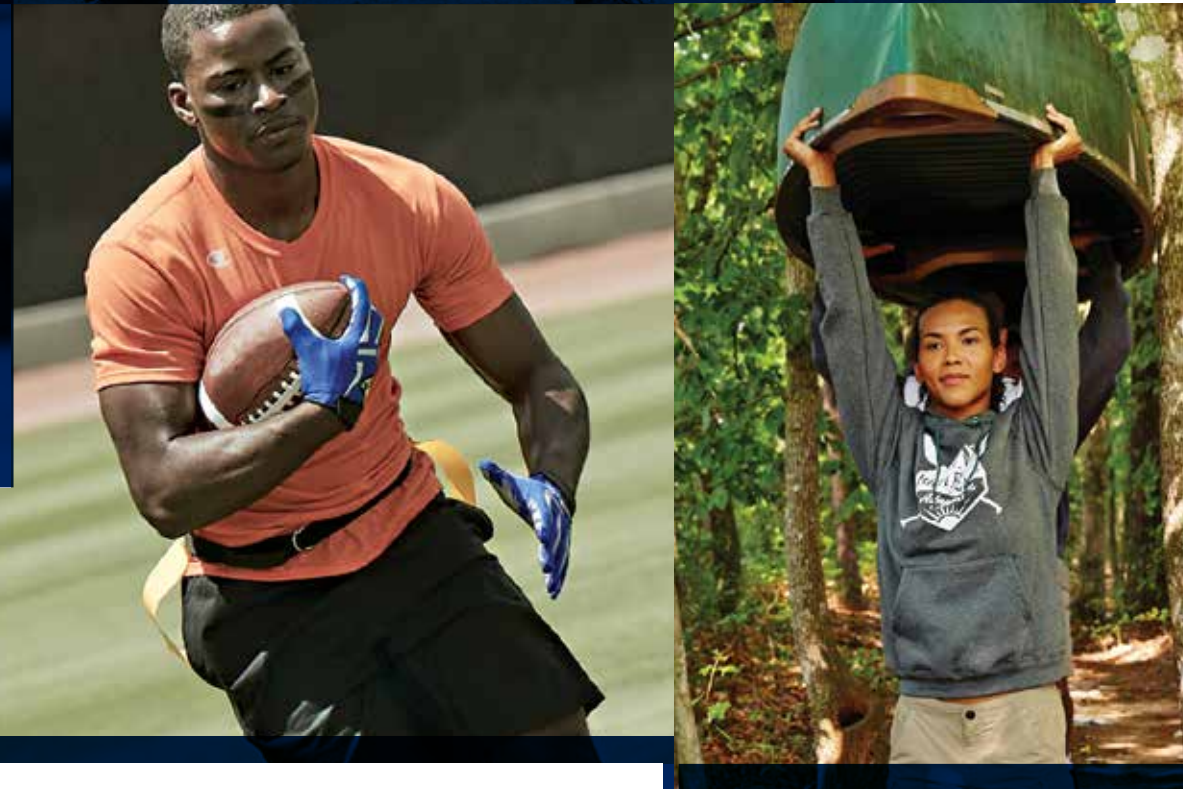


championlocator.com
1.800.685.7557



2017





Like the people who wear it, there are many sides to Champion Athleticwear. There's the traditionalist and the innovator. The intense athlete, weekend warrior and yes, even the social butterfly. There's a warm side and a dry side. The fashionable and the steadfast. You can be many things in Champion Athleticwear. No matter what you choose, you will be known for your quality, style, fit and distinction.

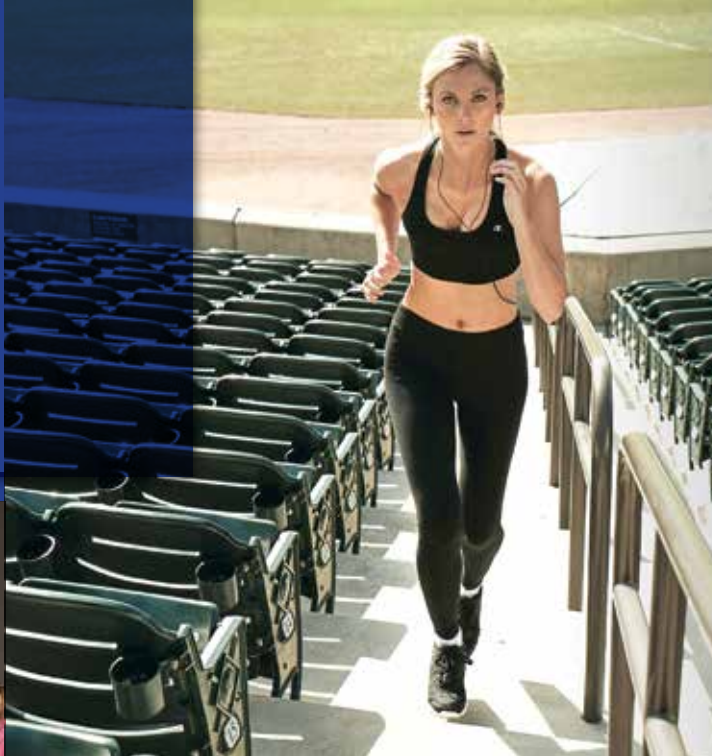
TABLE OF CONTENTS

New for 2017	4-5
Champion Technology	6-7
Product Line Overview	8-9
NEW!	
AUTHENTIC ORIGINALS	10-11
T-Shirts, Henley	12-13
Fleece	14-15
PERFORMANCE	16-17
Champion Vapor® Tees	18-19
Double Dry® Tees	20-21
Mesh Shorts	22-23
Performance Fleece	24-25
Sportshirts	26-27
NEW!	
WOMEN'S EVERYDAY PERFORMANCE	28-29
Sports Bras, Bottoms	30-31
AUTHENTICS	32-33
Reverse Weave® Fleece	34-35
Cotton Max	36-37
Double Dry Eco® Fleece	38-41
Classic Jersey	42-44
Cotton Shorts	45
Hanes For Education	46
Commitment To Quality	47
Authentic Originals Color Chart	48-49
Champion Color Chart	50-51

NEW FOR 2017

INTRODUCING CHAMPION® AUTHENTIC ORIGINALS

Champion Athleticwear takes a big fashion step forward with an entirely new collection designed for the active social lives of today's men and women. Available in 12 styles, several colors and 5 different fabric profiles. See the entire line on pages 10-15.



WOMEN'S EVERYDAY PERFORMANCE

Forty years ago, Champion Athleticwear introduced the sports bra to the world. It's been a staple of performance wear since. Now its latest iteration is available along with three styles of performance bottoms. See the collection on pages 28-31.

JERSEY SHORT WITH POCKETS

100% cotton jersey short comfortably at home in athletic and casual situations. See page 45.



NEW RAGLAN BASEBALL T-SHIRT COLORS

The classic jersey now has a deeper bench than ever with four new colors. More on page 43.



T137

-  OXFORD GRAY/CHARCOAL 08
-  OXFORD GRAY/CHARITY PINK 0H
-  OXFORD GRAY/C. GOLD 06
-  OXFORD GRAY/PURPLE 04



NOW THIS IS WEARABLE TECHNOLOGY

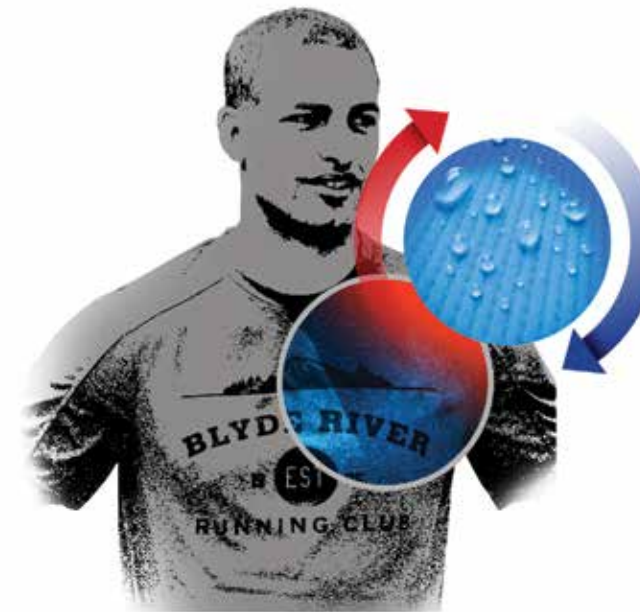


This year, all Champion Double Dry® T-Shirts feature FreshIQ™, an advanced odor control technology that targets odor-causing bacteria thereby reducing unpleasant odors. Odor has been identified as one of the top two issues for activewear and Champion Double Dry® T-Shirts are tackling it head on.




PREVENT PILLING FROM PILING ON


The environmentally-friendly Champion Double Dry Eco® Fleece is now made of 50% Cotton and 50% Air-Jet Polyester. The Air-Jet spinning systems improve after-wash appearance and reduces pilling while producing a softer hand and lower shrinkage vs. cotton-rich OE fleece.




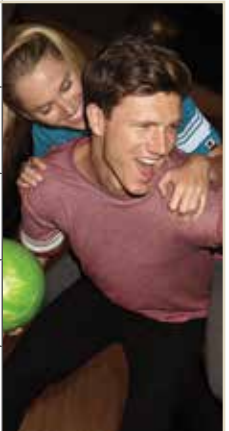
Champion Vapor® Cotton T-Shirts feature an innovative application designed to not only wick away moisture, but also to actively respond to body temperature, keeping the body cooler.

PLAY LIKE A Champion

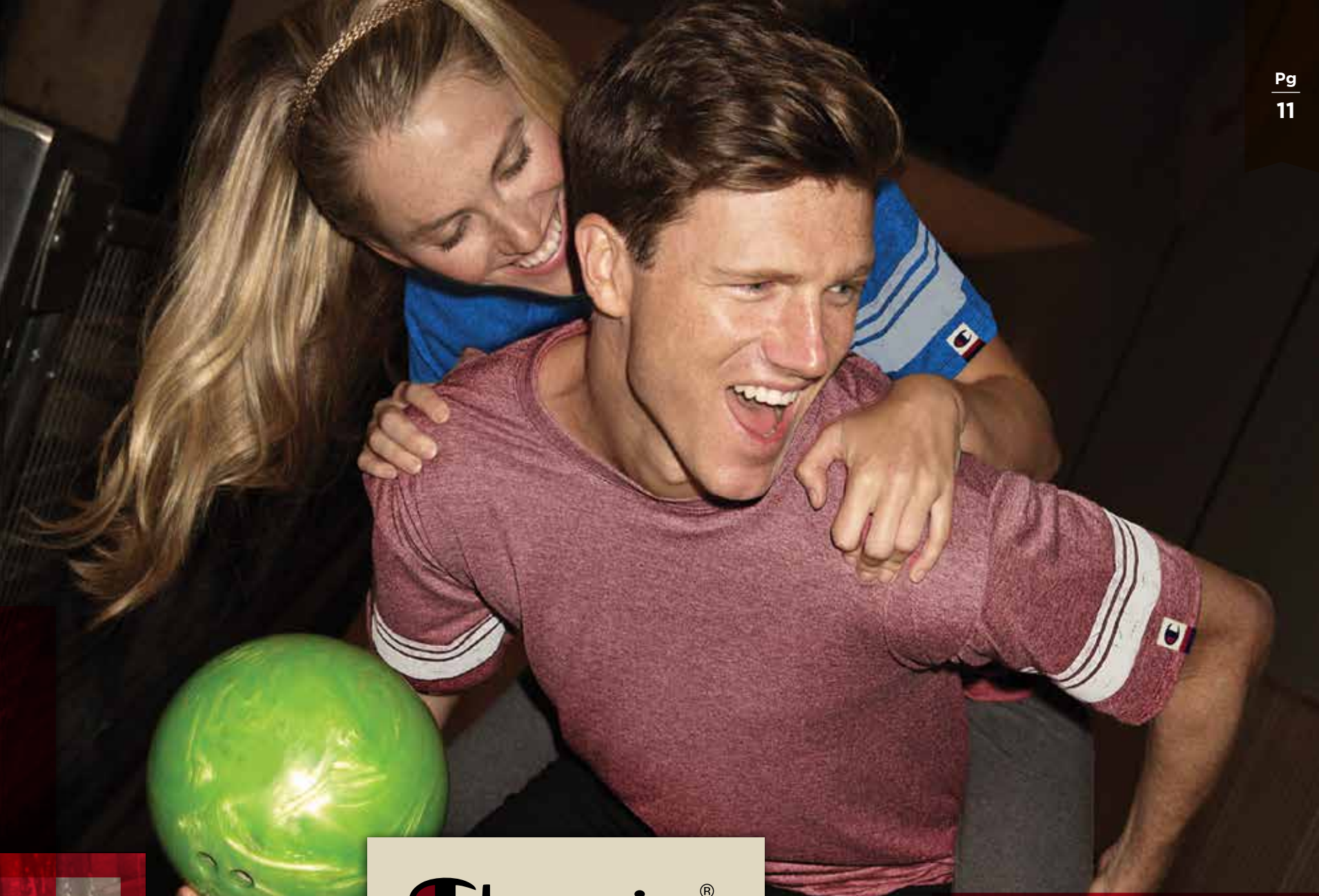
AUTHENTICS		Styles	Fabric Platform	Champion Advantage	Sizes	
	Classic Jersey	Tees, Baseball Tees and Shorts	5.2 oz. - 7.0 oz., 100% cotton jersey	Durability in a look that never goes out of style	Adult S-3XL Youth S-XL	
	Double Dry Eco® Fleece	Tops and Pants	9 oz., 50% cotton/50% polyester fleece	Made with a percentage of recycled polyester fibers from plastic	Adult S-3XL Youth S-XL	
	Cotton Max Fleece	Tops and Pants	9.7 oz., 90% cotton/10% polyester fleece	Maximum softness, 100% cotton face for superior DTG printing	Adult XS-3XL	
	Reverse Weave® Fleece	Tops and Pants	12 oz., 82% cotton/18% polyester fleece	The original Super Heavyweight built to resist shrinkage	Adult S-3XL	

PERFORMANCE		Styles	Fabric Platform	Champion Advantage	Sizes	
	Performance Fleece	Tops and Pants	5.4 oz., 100% polyester fleece	Experience warmth without the weight with our full line of performance fleece	Adult S-3XL	
	Champion Vapor®	Tees, Sportshirts, 1/4-Zip Pullovers	3.8 oz. - 5.3 oz., 100% polyester and cotton/polyester jersey	The lightest, fastest-drying fabric we've ever designed	Adult S-2XL	
	Double Dry®	Tees and Sportshirts	4.1 oz., 100% polyester jersey interlock	Superior moisture wicking and an athletic fit elevates any event	Adult S-3XL Youth S-XL	
	Mesh Shorts	Shorts	3.7 oz., 100% polyester	Breathable design and classic styling make our mesh shorts a perennial favorite	Adult S-3XL	

WOMEN'S EVERYDAY PERFORMANCE		Styles	Fabric Platform	Champion Advantage	Sizes	
	Sports Bra	Absolute Racerback	87% Polyester/13% Spandex	#1 Athletic Sports Bra Brand	XS-XL	
	Performance Bottoms	Legging, Capri, Yoga	7.4 oz., 88% Polyester/12% Spandex	Wicks moisture, easy-stretch design	XS-2XL	

AUTHENTIC ORIGINALS		Styles	Fabric Platform	Champion Advantage	Sizes	
	T-Shirts	T-Shirts, Pocket T-Shirts	4.3 oz. 60% Polyester/30% Cotton/10% Rayon and 4.5 oz. 60% Polyester/40% Cotton	Stylish, lightweight blended comfort	S-3XL	
	Fleece	Tops and Pants	7.4 oz. 43% Rayon/43% Polyester/14% Cotton and 8.5 oz. 80% Cotton/20% Polyester	A new take on renowned Champion® fleece	S-3XL	
	Henley	Henley	4.5 oz. 100% cotton ring-spun slub	Athletic Heritage + Contemporary Design	S-3XL	
Tank	Swing Tank	4.3 oz., 60% Polyester/30% Cotton/10% Rayon	Fashion forward for active social lives	S-2XL		

Learn more at championlocator.com or call 800-685-7557.

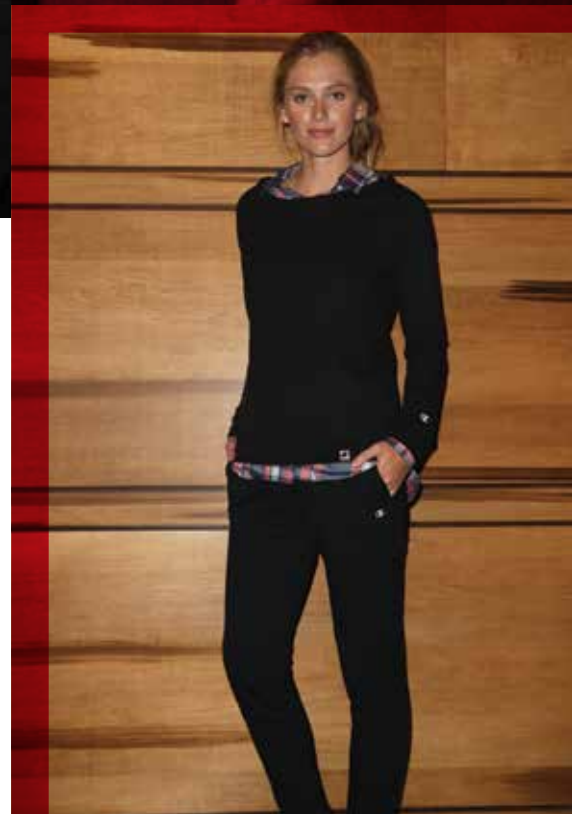


**INTRODUCING CHAMPION®
AUTHENTIC ORIGINALS**

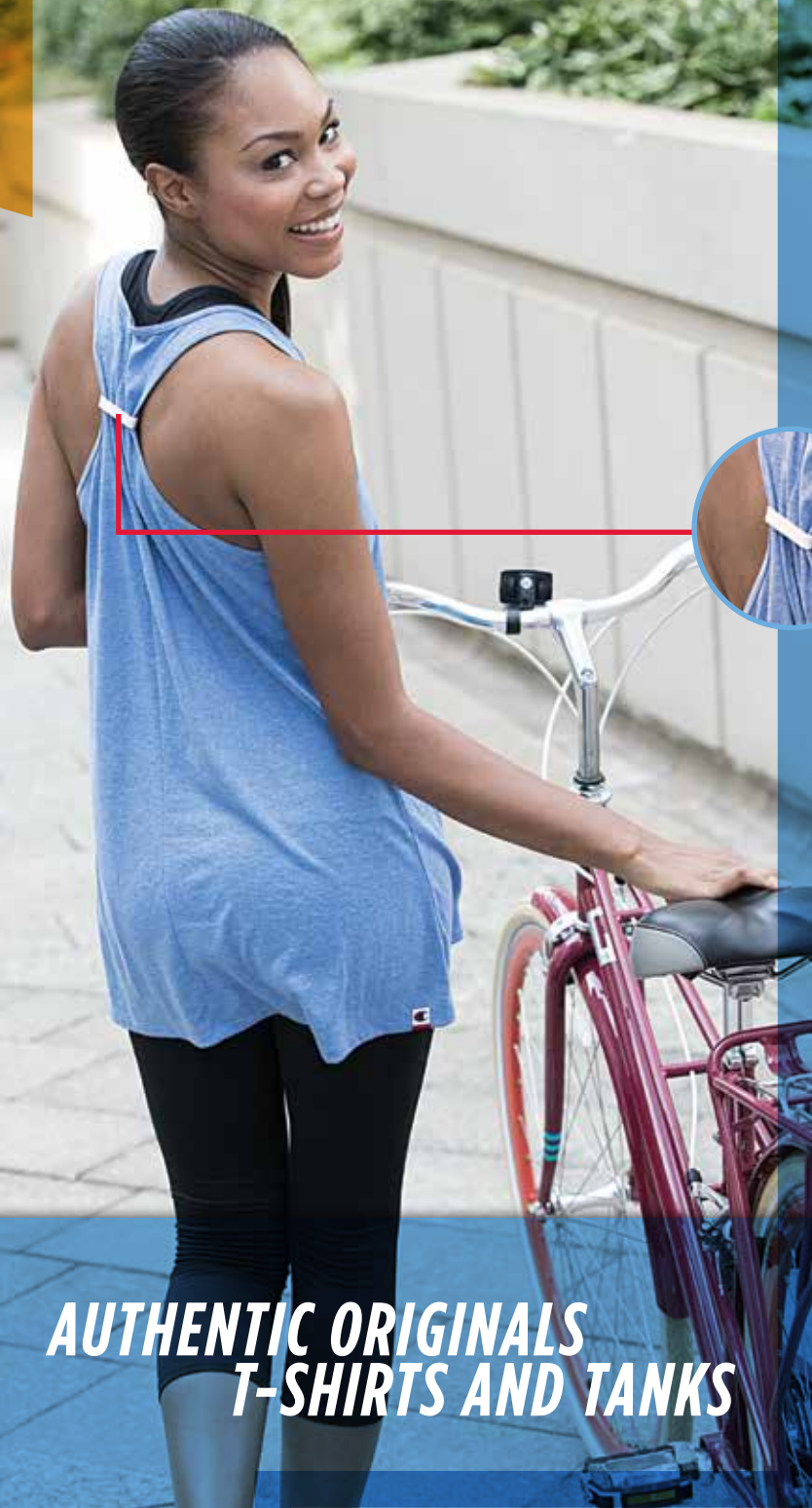
THE STYLISH SIDE



THINK OUTSIDE THE GYM. Champion® Authentic Originals is a ground-up, fashion-forward collection of tops and bottoms unlike anything Champion has designed in its nearly 100-year history. The line features twelve contemporary men's and women's styles—including Henley, French Terry and Jersey Swing Tank—available in a carefully chosen set of trendsetting colors. Champion® Authentic Originals is made for all kinds of social occasions, except the boring ones.



**ATHLETICALLY INSPIRED.
FASHIONABLY WORN.**



AO400

BLACK	BK
WHITE	WH
CHARCOAL HEATHER	HL
BLUE JAZZ HEATHER	BF
LOTUS PINK HEATHER	Y8
CARMINE RED HEATHER	RT

AO400 Women's Triblend Jersey Swing Tank

- 4.3 oz., 60/30/10 Polyester/Cotton/Rayon Jersey
- Racerback silhouette
- Scoop neckline
- 1x1 rib neckline and armholes
- "Natural" color twill tie at back
- Champion "C" logo wrap label at bottom hem
- S - 2XL: 3 dz/case
- Imported

**AUTHENTIC ORIGINALS
T-SHIRTS AND TANKS**



AO380 Long Sleeve Henley

- 4.5 oz., 100% Ring-Spun Cotton Slub Jersey
- 4-button placket with "Natural" colored buttons
- Self-fabric contrasting inner-placket
- 1x1 rib collar
- Raglan sleeves
- Open cuffs with double-needle hems
- Shaped shirt-tail hem with double-needle stitching
- Champion "C" logo wrap label on left sleeve
- S - 3XL: 3 dz/case
- Imported



AO250 Soft-Wash Pocket Tee

- 4.5 oz., 60/40 Ring Spun Cotton/Polyester
- Soft wash garment dye process
- Left chest pocket
- Raglan sleeves with 3-needle top cover-stitching
- Ribbed V-Notch with 3-needle top cover-stitching
- 1x1 rib collar
- Double-needle stitching at sleeves and bottom hem
- Dyed-to-match twill shoulder-to-shoulder taping
- Black, White: 100% cotton
- Champion "C" logo wrap label on left sleeve
- S - 3XL: 3 dz/case
- Imported



AO200 Soft-Wash Tee

- 4.5 oz., 60/40 Ring Spun Cotton/Polyester
- Soft wash garment dye process
- 1x1 rib collar
- Double-needle stitched collar, sleeves, armhole and bottom hem
- Dyed-to-match twill shoulder-to-shoulder taping
- Black, White: 100% cotton
- Champion "C" logo patch on left sleeve
- S - 3XL: 3 dz/case
- Imported



AO300 Triblend Varsity Tee

- 4.3 oz., 60/30/10 Polyester/Cotton/Rayon Jersey
- Distressed printed stripes on sleeves in a "Natural" color
- 1x1 rib collar
- "Natural" color woven twill shoulder-to-shoulder taping
- Single-needle stitched armholes
- Double-needle stitched sleeves and bottom hem
- Champion "C" logo wrap label on left sleeve
- S - 3XL: 3 dz/case
- Imported



AO350 Women's Triblend Varsity Tee

- 4.3 oz., 60/30/10 Polyester/Cotton/Rayon Jersey
- Distressed printed stripes on sleeves
- V-Neck with self-fabric collar and scooped bottom hem
- "Natural" color woven twill back neck display
- Single-needle stitched armholes
- Scooped bottom hem
- Shaped shirt-tail hem with double-needle stitching
- Champion "C" logo wrap label on left sleeve
- S - 2XL: 3 dz/case
- Imported

AO200	AO250	AO300	AO350		
				BLACK	BK
				WHITE	WH
				OATMEAL HEATHER	ZT
				OXFORD GRAY	OX
				CHARCOAL HEATHER	HL
				BLUE JAZZ HEATHER	BF
				ATHLETIC ROYAL HEATHER	A9
				NAVY HEATHER	NZ
				LOTUS PINK HEATHER	Y8
				CARMINE RED HEATHER	RT
				GREEN LUCK HEATHER	GK

AUTHENTIC ORIGINALS FLEECE

Worn at the intersection of sport and life



ORIGINALS

EST • 1919



AO500 Sueded Fleece Crew

- 8.5 oz., 80/20 Cotton/Polyester 3-End Fleece
- 2x2 rib collar, cuffs, waistband and V-Notch
- “Natural” color woven twill back neck display
- Forward shoulders
- Triple-needle stitching throughout
- Relaxed waistband
- 100% cotton face—great for screen or DTG printing
- Champion “C” embroidery in “Natural” color on left sleeve
- S - 3XL: 2 dz/case
- Imported



AO600 Sueded Fleece Pullover Hood

- 8.5 oz., 80/20 Cotton/Polyester 3-End Fleece
- Jersey lined hood in Oatmeal Heather color
- Forward shoulders
- Flat woven drawcords with ends turned and tacked
- 2x2 rib cuffs and waistband
- “Natural” color woven twill back neck display
- Triple-needle stitching throughout
- Relaxed waistband
- 100% cotton face—great for screen or DTG printing
- Champion “C” embroidery in “Natural” color on left sleeve
- S - 3XL: 2 dz/case
- Imported



AO700 Sueded Fleece Jogger

- 8.5 oz., 80/20 Cotton/Polyester 3-End Fleece
- Front entry pockets with jersey lined pocket bags
- Self-fabric waistband with encased elastic
- Flat woven drawcords with ends turned and tacked
- Triple-needle stitched outseam
- Stitched mock fly
- Back pocket with ribbed welt
- 2x2 rib cuffs
- 100% cotton face—great for screen or DTG printing
- Champion “C” embroidery in “Natural” color on left hip
- S - 3XL: 2 dz/case
- Imported

A0500	A0600	A0700		
			BLACK	BK
			OXFORD GRAY	OX
			OATMEAL HEATHER/OXFORD GRAY	ZX
			OXFORD GRAY/OATMEAL HEATHER	ZZ
			CHARCOAL HEATHER	HL
			BLUE JAZZ HEATHER	BF
			NAVY HEATHER	NZ
			CARMINE RED HEATHER	RT
			GREEN LUCK HEATHER	GK



AO550 Women's French Terry Crew

- 7.4 oz., 43/43/14 Rayon/Polyester/Cotton French Terry
- Fashion Boatneck
- Raglan armholes
- 1x1 rib cuffs and waistband with spandex
- “Natural” color woven twill back and neck display
- Longer length for comfort and coverage
- Champion “C” embroidery in “Natural” color on left sleeve
- S - 2XL: 2 dz/case
- Imported



AO650 Women's French Terry Zip Hood

- 7.4 oz., 43/43/14 Rayon/Polyester/Cotton French Terry
- Scuba hood
- Raglan armholes
- Jersey lined on seam pockets
- Exposed metal zipper with “Natural” colored zipper tape
- 1x1 rib cuffs and waistband with spandex
- Flat woven drawcords with ends turned and tied
- Longer length for comfort and coverage
- Champion “C” embroidery in “Natural” color on left sleeve
- S - 2XL: 2 dz/case
- Imported



AO750 Women's French Terry Jogger

- 7.4 oz., 43/43/14 Rayon/Polyester/Cotton French Terry
- Jersey lined on seam pockets
- 29” inseam
- 1x1 rib cuffs and waistband with spandex
- Flat woven drawcards with ends turned and tied
- Drawcords are “Natural” colored
- Champion “C” embroidery in “Natural” color on left hip
- S - 2XL: 2 dz/case
- Imported

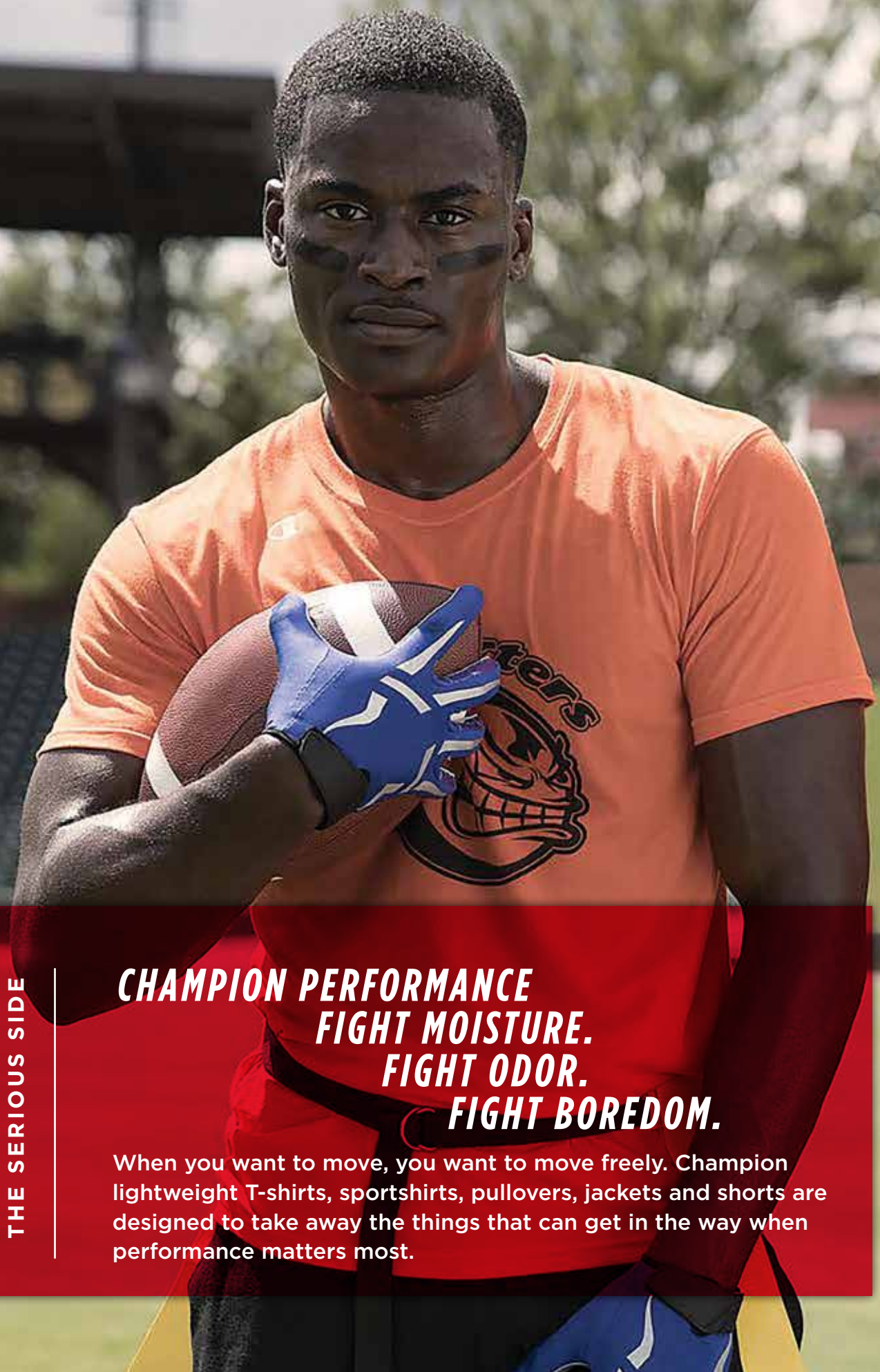
A0550	A0650	A0750		
			BLACK	BK
			OATMEAL HEATHER	ZT
			OATMEAL HEATHER/OXFORD GRAY	ZX
			OXFORD GRAY/OATMEAL HEATHER	OX
			OXFORD GRAY FLEECE	ZZ
			CHARCOAL HEATHER	HL
			BLUE JAZZ HEATHER	BF
			NAVY HEATHER	NZ
			LOTUS PINK HEATHER	Y8
			CARMINE RED HEATHER	RT



THE SERIOUS SIDE

**CHAMPION PERFORMANCE
FIGHT MOISTURE.
FIGHT ODOR.
FIGHT BOREDOM.**

When you want to move, you want to move freely. Champion lightweight T-shirts, sportshirts, pullovers, jackets and shorts are designed to take away the things that can get in the way when performance matters most.





CHAMPION VAPOR® T-SHIRTS
Ultrafast-drying, retail-quality t-shirts

- CV20 CV26 CV30
- OXFORD GRAY HEATHER 0G
- SLATE GRAY HEATHER 3H
- BLACK HEATHER B7
- ATHLETIC ROYAL HEATHER A9
- NAVY HEATHER N2
- SCARLET HEATHER S9

- Occasions:**
- Races
 - Competitive events
 - Hot weather
 - Vigorous exertion

- 3.8 oz., 100% performance polyester jersey
- Wicks moisture away from the body and helps control moisture build-up
- Three-needle cover-stitching throughout
- Snag resistant
- Champion logo tape reinforces tag-free neck seam
- Reflective "C" logo on left sleeve / Champion script at center back neck
- S - 2XL: S - XL: 2dz/case; 2XL: 1 dz/case
- Imported



CV20
Champion Vapor®
T-Shirt



CV26
Champion Vapor®
Long Sleeve T-Shirt



CV30
Women's Champion
Vapor® T-Shirt



T380
Champion Vapor®
Cotton Short Sleeve Tee



T390
Champion Vapor®
Cotton Long Sleeve Tee



T050
Champion Vapor® Cotton
Women's Short Sleeve Tee

- 4.5 oz., 60% ring-spun cotton / 40% polyester jersey
- Wicks moisture away from the body and helps control moisture build-up
- 40+ UPF rating, excellent UV protection
- Tag-free neck label
- Double-needle stitching throughout
- "C" logo on right chest / Champion script at center back neck
- Contrasting shoulder-to-shoulder taping
- Light Steel: 90% cotton/10% polyester; Silver Gray: 99% cotton/1% polyester
- XS - 3XL: XS - XL: 2dz/case; 2XL - 3XL: 1dz/case
- Imported



CHAMPION VAPOR® COTTON T-SHIRTS

Features an innovative application designed to react to body temperature as activity levels change to keep you cool.

- Occasions:**
- Practice
 - Charity walks
 - Rec leagues
 - Medium-active exertion

T050	T380	T390
BLACK		BK
WHITE		WH
SILVER GRAY		SV
LIGHT STEEL		LW
COLUMBIA BLUE		CU
ATHLETIC ROYAL		UF
TEAM NAVY		NI
PURPLE		PR
CHARITY PINK		PX
CARDINAL		CD
TEAM SCARLET		L9
TEAM ORANGE		TR
TEAM GOLD		TD

CHAMPION DOUBLE DRY® INTERLOCK T-SHIRTS

Now with FreshIQ™ Advanced Odor Control technology that helps to reduce unpleasant odors from your clothing.

NOW WITH
FreshIQ™
Advanced Odor
Protection Technology



CW22
Champion Double Dry®
Interlock T-Shirt



CW23
Women's Champion
Double Dry® V-Neck T-Shirt



CW26
Champion Double Dry®
Long Sleeve Interlock T-Shirt



CW24
Champion Youth Double Dry®
Interlock T-Shirt

- 4.1 oz., 100% polyester jersey
- FreshIQ™ Advanced Odor Control
- Moisture wicking; rapid dry interlock fabric
- 50+ UPF rating, excellent UV protection
- Smooth self-fabric collar
- Cover-seamed armholes and neck for durability
- Double-needle sleeve and bottom hems
- Reflective "C" logo on left sleeve / Champion script at center back neck
- S - 3XL: 3 dz/case (Youth S - XL: Women's S - 2XL)
- Imported

CW22	CW23	CW24	CW26		
■	■	■	■	BLACK	BK
■	■	■	■	WHITE	WH
■	■	■	■	STONE GRAY	R7
■	■	■	■	LIGHT BLUE	LB
■	■	■	■	ROYAL BLUE	RB
■	■	■	■	NAVY	NY
■	■	■	■	PURPLE	PR
■	■	■	■	WOW PINK	6A
■	■	■	■	MAROON	MR
■	■	■	■	SCARLET	SK
■	■	■	■	DARK GREEN	14
■	■	■	■	SAFETY GREEN	82
■	■	■	■	SAFETY ORANGE	SH
■	■	■	■	STONE GRAY CAMO	X1
■	■	■	■	SAFETY GREEN CAMO	CN
■	■	■	■	SAFETY ORANGE CAMO	CZ
■	■	■	■	WOW PINK CAMO	WP

T205	
■	BLACK BK
■	WHITE WH
■	STONE GRAY R7
■	ATHLETIC ROYAL UF
■	VIBE NAVY E4
■	MAROON MR
■	SCARLET SK



T205
Champion Double Dry® Mesh T-Shirt

- 4.1 oz., 100% polyester Double Dry® flatback mesh
- Moisture wicking
- Self-fabric collar and neck tape
- Contrast stitched raglan sleeves
- Double-needle sleeve and bottom hems
- Reflective "C" logo on left sleeve
- S - 3XL: 5 dz/case
- Imported

OCCASIONS
Teams
Runs/Walks
Warm Weather
Active Exertion





CHAMPION® MESH SHORTS

Nearly 50 years ago, Champion Athleticwear introduced mesh shorts and they've been an unmatched performance staple since.



8731 Champion® Mesh Short S162 Champion® Mesh Short with Pockets

- Body: 3.7 oz., 100% polyester mesh
- 9-inch inseam
- Lining: 2.1 oz, 100% polyester tricot
- Full athletic fit
- Multi-needle elastic waistband with inside drawcord
- "C" logo at left hip
- S - 3XL: 4 dz/case (S162: S - 2XL: 6 doz/case)
- Imported



CA33 Women's Champion® Mesh Short

- 5-inch inseam
- "C" logo at left hem
- S - 2XL: 5 dz/case
- Imported

8731	S162	CA33	Color Name	Code
■	■	■	BLACK	BK
■	■	■	ATHLETIC GRAY	34
■	■	■	ATHLETIC ROYAL	UF
■	■	■	NAVY	NY
■	■	■	MAROON	MR
■	■	■	SCARLET	SK
■	■	■	ATHLETIC DARK GREEN	UC

CHAMPION® PERFORMANCE FLEECE

COMFORT IN. MOISTURE OUT.



Occasions:

- Coaching Staffs
- Outdoor Training
- Corporate Events

Champion® Performance Fleece
S220, S230, S260, S270, S280

- 5.4 oz., 100% polyester fleece
- Lightweight performance fleece fabric provides warmth without weight
- Wicking finish
- “C” logo at left cuff/hip
- Imported



S220
Champion® Performance Fleece Pullover Hood

- Two-ply hood with plush contrast lining
- Contrasting sleeve panel and drawcord
- Front pouch pocket
- S - 3XL: 1 dz/case
- Imported



S230
Champion® Performance Fleece Quarter-Zip Jacket

- Two-ply collar with plush contrast lining
- Reverse coil zipper
- S - 3XL: 1 dz/case
- Imported



S280
Champion® Performance Fleece Pant

- Self-fabric elastic waistband with drawcords
- Side entry pockets
- S - 3XL: 1 dz/case
- Imported



FORWARD SHOULDER

S260
Women's Champion® Performance Fleece Full-Zip Jacket

S270
Champion® Performance Fleece Full-Zip Jacket

- Reverse coil zipper
- Contrasting side panels with side entry pockets
- Two-ply collar with plush contrast lining
- S270: S - 3XL: 1 dz/case; S260: XS - 2XL: 1 dz/case
- Imported

S220	S230	S260	S270	S280	Color	Code	Notes
					SLATE GRAY HEATHER	3H	NEW
					BLACK	BK	
					BLACK/BLACK	2P	
					STONE GRAY	R7	
					STONE GRAY/BLACK	0V	
					ATHLETIC ROYAL/BLACK	EM	
					NAVY/STONE GRAY	S0	
					SCARLET/BLACK	S7	

CHAMPION® PERFORMANCE SPORTSHIRTS

Stylishly combines old-fashioned comfort with new-age, moisture-wicking properties.



H131
Ultimate Double Dry®
Performance Sportshirt

- 4.1 oz., 100% polyester micro knit
- Double Dry™ fabric wicks moisture away from the body and helps control moisture buildup
- Full athletic fit
- Double-needle stitched body and bottom hem
- 1x1 rib knit collar (100% polyester)
- H131 Two-button placket; H132 Three-button placket
- “C” logo on left sleeve / Champion script at center back neck
- S - XL: 2 dz/case; 2XL: 1dz/case
- Imported



H132
Women’s Ultimate
Double Dry® Sportshirt

H131	H132
BLACK BK	BK
WHITE WH	WH
NAVY NY	NY
ATHLETIC ROYAL UF	UF
SCARLET SK	SK

Occasions:

- Corporate Outings
- Workforce Uniforms
- Resortwear
- Golf and Tennis Events



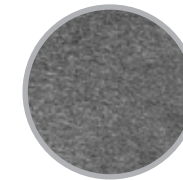
CHAMPION VAPOR® SPORTSHIRTS



CV60
Champion Vapor®
Sportshirt



CV70
Women’s Champion
Vapor® Sportshirt



HEATHER FABRIC
AVAILABLE IN ALL
STYLES

- 5.3 oz, 100% performance polyester jersey
- Wicks moisture away from the body and helps control moisture build-up
- Underarm mesh inserts for ventilation and breathability
- Three-needle cover-stitching throughout
- Champion logo tape reinforces tag-free neck seam
- Self-fabric collar
- Three-button placket
- Snag resistant
- Reflective “C” logo on right chest / Champion script at center back neck
- S - XL: 2dz/case; 2XL: 1 dz/case
- Imported



CV80 Champion Vapor® Quarter-Zip Pullover

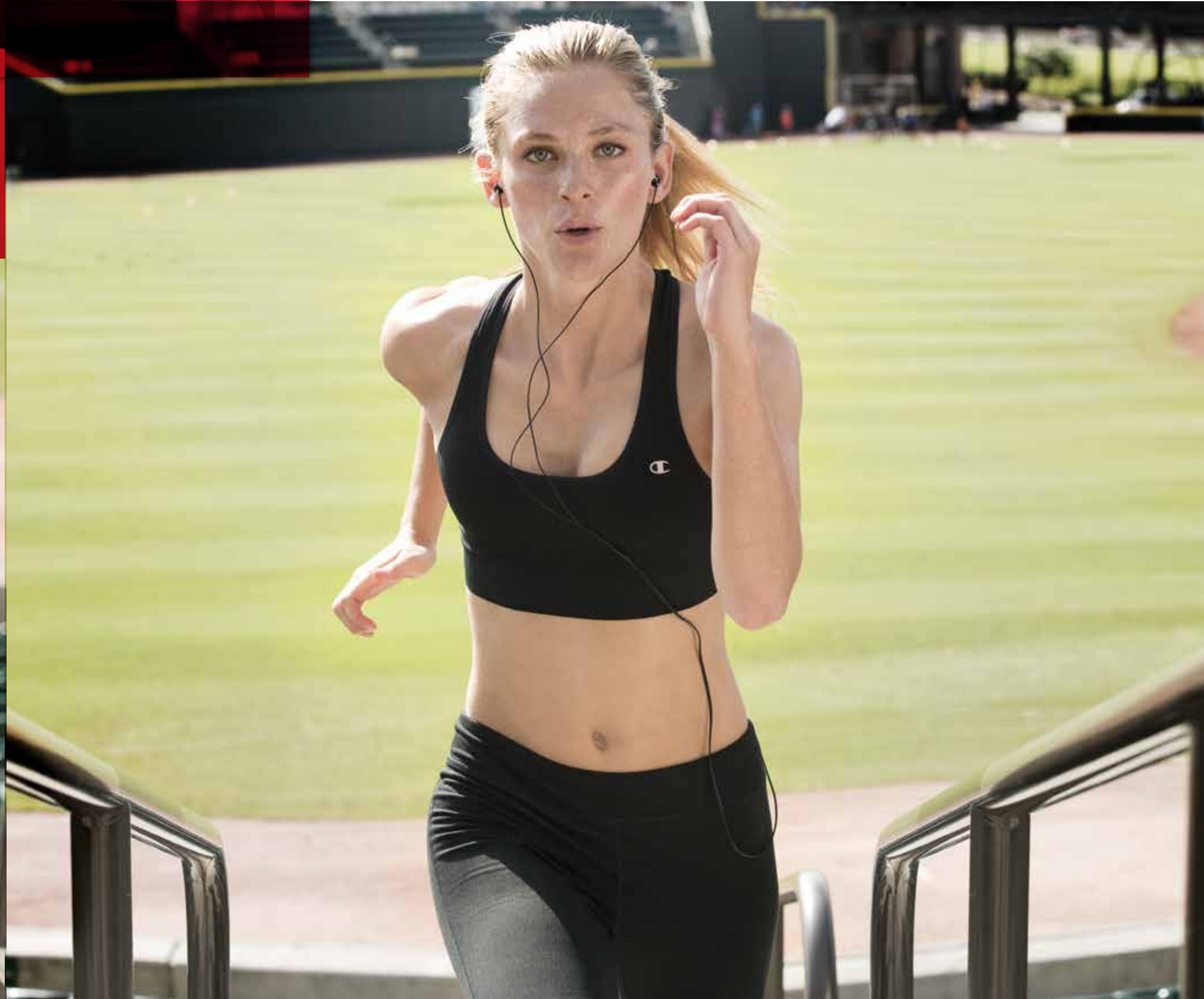
- 5.3 oz, 100% performance polyester jersey
- Zoned mesh inserts for ventilation and breathability
- Self-fabric collar with slate gray heather lining
- Dyed-to-match coil zipper
- Snag resistant
- Reflective “C” logo on right chest / Champion script at center back neck
- S - XL: 2 dz/case; 2XL: 1dz/case
- Imported

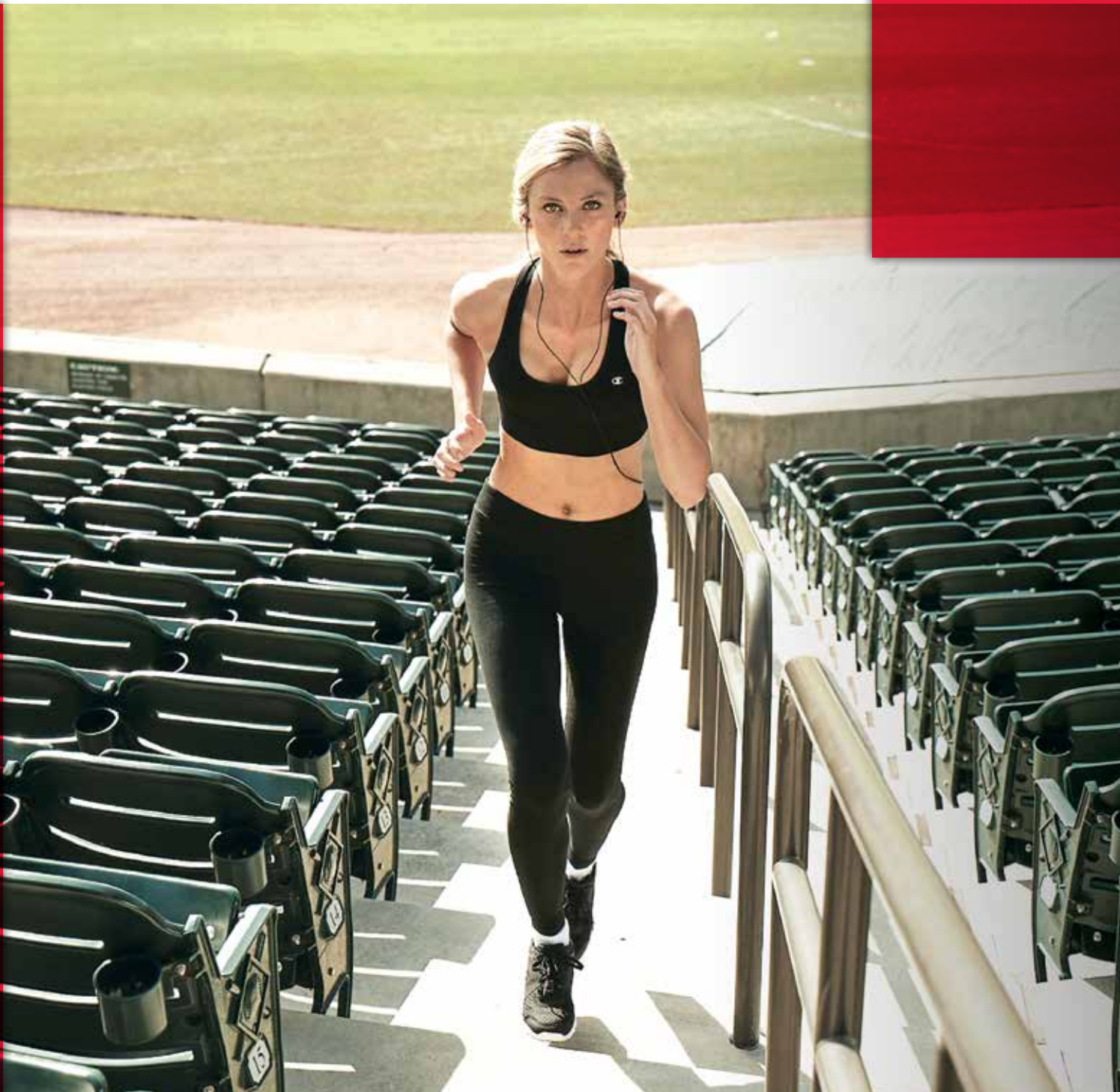
CV60	CV70	CV80
OXFORD GRAY HEATHER		0G
SLATE GRAY HEATHER		3H
BLACK HEATHER		B7
ATHLETIC ROYAL HEATHER		A9
NAVY HEATHER		N2
SCARLET HEATHER		S9

**WELCOME TO WOMEN'S
EVERYDAY PERFORMANCE**

Another first from the brand that invented the sports bra and is a worldwide leader in women's athletic apparel. Champion Athleticwear is proud to introduce a premier line of women's performance tops and bottoms now available for custom decoration.

NEW





CHAMPION® WOMEN'S EVERYDAY PERFORMANCE COLLECTION



B900
Absolute Racerback Sports Bra

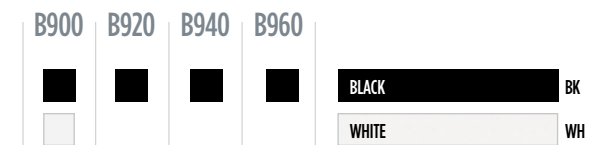
- 87% Polyester/13% Spandex
- SmoothTec™ band resists irritation and chafe
- Double Dry™ technology wicks moisture to keep you cool and dry
- Minimal seams minimize irritation for distraction-free comfort
- Racerback silhouette ensures a free range of motion
- C logo at left chest and center back band
- XS - XL: 2 dz/case



B920
Yoga Pant

B940
Legging

B960
Capri



PERFORMANCE BOTTOMS

Workout favorites with a fit that hugs from your hips down your legs. The stretch fabric moves with you and keeps you dry and comfortable.

- 7.4 oz., 88% Polyester/12% Spandex
- Wicking for moisture management
- Stretch for ease of movement
- Reflective details
- Fitted (B940, B960)
- Semi-Fitted (B920)
- XS - 2XL: 2 dz/case



THE RELIABLE SIDE

CHAMPION[®] AUTHENTICS

Whether outfitting the team, the fans or a resort's gift shop, Champion Athleticwear's trusted, proven, popular fleece and 100% cotton jersey collections have you covered from top to bottom, warm to cold, inside and out.



CHAMPION REVERSE WEAVE® FLEECE

Durability wins. For nearly 80 years, Champion® Reverse Weave® fleece has been the super-heavyweight choice for fans and athletes alike.



S149 Champion Reverse Weave® Crew

- 12 oz., 82% cotton/18% polyester
- Low shrinkage
- Four-sided sewn down label
- 1x1 rib at underarm, sides and bottom hem
- 3-¾ inch wide 1x1 ribbed knit cuffs
- “C” logo at left cuff
- Silver Gray: 80% cotton/20% polyester; Oxford Gray: 78% cotton/22% polyester
- S101: S - 3XL: 1 dz/case
- S149: S - XL: 2 dz/case; 2XL - 3XL: 1 dz/case
- Imported



S101 Champion Reverse Weave® Pullover Hood

RW10	S101	S149		
			BLACK	BK
			SILVER GRAY	SV
			OXFORD GRAY	OX
			ATHLETIC ROYAL	UF
			TEAM NAVY	NI
			CARDINAL	CD
			SCARLET	SK
			DARK GREEN	14



RW10 Champion Reverse Weave® Fleece Pant

- 12 oz., 82% cotton/18% polyester fleece
- Side pockets
- Self-fabric waistband with cotton draw cord
- Elastic cuffs
- “C” logo at left hip
- S - 3XL: 1 dz/case
- Silver Gray: 80% cotton/20% polyester; Oxford Gray: 78% cotton/22% polyester
- Imported





CHAMPION® COTTON MAX

100% cotton face for superior DTG printing puts Cotton Max at the front of the line for versatile spiritwear.



S171, S178, S185

- 9.7 oz., 90% cotton/10% polyester
- 100% cotton face for excellent printability
- Cover-stitching throughout
- Contrast half-moon facing and woven tape at back of neck
- 2x1 ribbed spandex enhanced trim
- Embroidered "C" logo at left cuff
- Light Steel: 90% cotton/10% polyester; Silver Gray: 99% cotton/1% polyester
- Imported



TWO-PLY HOOD WITH MATCHING DRAWSTRING

SUPER HEAVYWEIGHT REVERSE WEAVE®
HEAVYWEIGHT COTTON MAX
MIDDLEWEIGHT ECO-FLEECE
LIGHTWEIGHT PERFORMANCE FLEECE

S171 Champion® Cotton Max Pullover Hood

- Contrast self-fabric two-ply hood with matching drawstring
- V-notch detail at neck
- Front pouch pocket
- XS - 3XL: 1 dz/case



P210 Champion® Cotton Max Fleece Pant

- 9.7 oz., 90% cotton/10% polyester
- Double-needle stitching throughout
- Covered elastic waistband
- Sideseam pockets with bartacks for durability
- Elastic cuffs
- Embroidered "C" logo at left hip
- XS - 3XL: 2 dz/case
- Light Steel: 90% cotton/10% polyester; Silver Gray: 99% cotton/1% polyester
- Imported



S178 Champion® Cotton Max Crew

- V-notch crew neck
- XS - 3XL: 1 dz/case

S171	S178	S185	P210
BLACK	BK		
SILVER GRAY	SV		
LIGHT STEEL	LW		
ATHLETIC ROYAL	UF		
TEAM NAVY	NI		
CARDINAL	CD		
TEAM SCARLET	LS		



S185 Champion® Cotton Max Quarter-Zip Hood

- Quarter-zip hood
- Contrast self-fabric two-ply hood
- Front pouch pocket
- XS - 3X: 1 dz/case



CHAMPION DOUBLE DRY ECO® FLEECE



S400
Double Dry Eco® Quarter-Zip Pullover

- 9 oz, 50% cotton/50% Air-Jet Polyester
- Made with a percentage of recycled polyester fibers from plastic
- Fabric wicks moisture away from the body and helps control moisture buildup
- Fleece lined collar
- Forward shoulders
- Quarter-zip covered zipper
- Sewn-in front pockets
- “C” logo on left sleeve
- S - 2XL: 2 dz/case; 3XL: 1dz/case
- Imported

NOW WITH AIR-JET POLYESTER



S600
Double Dry Eco® Crew

- 9 oz, 50% cotton/50% Air-Jet Polyester
- Made with a percentage of recycled polyester fibers from plastic
- Durable cover-stitching throughout
- Heavy rib knit waistband and cuffs
- Set-in sleeves
- “C” logo at left cuff
- S - 3XL: 2 dz/case
- Imported



S750
Double Dry Eco® Colorblock Pullover Hood

- 9 oz, 50% cotton/50% Air-Jet Polyester
- Made with a percentage of recycled polyester fibers from plastic
- Durable cover-stitching throughout
- Two-ply hood with dyed-to-match drawcord
- Front pouch pocket
- Heavy rib knit waistband and cuffs
- “C” logo at left cuff
- S - 2XL: 2 dz/case; 3XL: 1 dz/case
- Imported

S750	
BLACK/CHARCOAL HEATHER	BZ
BLACK/SCARLET	ZD
CHARCOAL HEATHER/WHITE	CK
CHARCOAL HEATHER/LT STEEL	CZ
LT STEEL/BLACK	LD
LT STEEL/NAVY	LY
LT STEEL/ROYAL BLUE	Z9
NAVY/GOLD	1D



S700
Double Dry Eco® Pullover Hood

- 9 oz, 50% cotton/50% Air-Jet Polyester
- Made with a percentage of recycled polyester fibers from plastic
- Two-ply hood with dyed-to-match drawcord
- Heavy rib knit waistband and cuffs
- Front pouch pocket
- Set-in sleeves
- “C” logo at left cuff
- S - 2XL: 2 dz/case; 3XL: 1 dz/case
- Imported

S400	S600	S700		
■	■	■	BLACK	BK
■	■	■	WHITE	WH
■	■	■	SILVER GRAY	SV
■	■	■	LIGHT STEEL	LW
■	■	■	CHARCOAL HEATHER	HL
■	■	■	ROYAL BLUE	RB
■	■	■	ROYAL BLUE HEATHER	RH
■	■	■	NAVY	NY
■	■	■	NAVY HEATHER	NZ
■	■	■	MAROON	MR
■	■	■	MAROON HEATHER	UA
■	■	■	SCARLET	SK
■	■	■	SCARLET HEATHER	S9
■	■	■	ORANGE	ON
■	■	■	GOLD	GO
■	■	■	DARK GREEN	14
■	■	■	DARK GREEN HEATHER	DH

THE RESPONSIBLE SIDE



TEN STYLES. ONE PLANET.

Made with up to 5% recycled polyester. At HanesBrands Inc., our recycled polyester products keep the equivalent of nearly 38 million plastic bottles from landfills each year.



ALL SHAPES AND SIZES
CARE ABOUT THE EARTH.



P800
Double Dry Eco®
Open Bottom
Fleece Pant with
Pockets

P900
Double Dry Eco®
Fleece Pant

- Covered elastic waistband with inside drawcord
- 9 oz, 50% Cotton/50% Air-Jet Polyester
- Made with a percentage of recycled polyester fibers from plastic
- Elastic cuffs
- “C” logo at left hip
- S - 2XL: 2 dz/case
- Imported

P800	P900		
		BLACK	BK
		LIGHT STEEL	LW
		NAVY	NY

S800	
	BK
	LW
	NY
	RB
	SK
	14
	14
	SV
	HL
	RH
	N2
	S9
	DH
	UA



NO DRAWCORD
FOR SAFETY

S890
Youth Double Dry Eco®
Full-Zip Hood

- 9 oz, 50% Cotton/50% Air-Jet polyester
- Made with a percentage of recycled polyester fibers from plastic
- Fabric wicks moisture away from the body and helps control moisture buildup
- Durable cover-stitching throughout
- Set-in sleeves
- Heavy rib knit waistband and cuffs
- “C” logo at the left cuff
- CPSIA tracking label compliant
- S - XL: 2 dz/case
- Imported



S790
Youth Double Dry Eco®
Pullover Hood

S690	S790	S890	P890		
				BLACK	BK
				LIGHT STEEL	LW
				ROYAL BLUE	RB
				NAVY	NY
				SCARLET	SK



S800
Double Dry Eco® Full-Zip Hood

- 9 oz, 50% cotton/50% Air-Jet Polyester
- Made with a percentage of recycled polyester fibers from plastic
- Durable cover-stitching throughout
- Two-ply hood with dyed-to-match drawcord
- Front pouch pocket
- Heavy rib knit waistband and cuffs
- Set-in sleeves
- “C” logo at left cuff
- S - 3XL: 1 dz/case
- Imported



S690
Youth Double Dry
Eco® Crew



P890
Youth Double Dry Eco®
Open Bottom Fleece Pant

- Four-needle elastic waistband with no drawcord for safety
- 9 oz, 50% Cotton/50% Air-Jet Polyester
- Made with a percentage of recycled polyester fibers from plastic
- Sideseam pockets with bartacks for durability
- Relaxed open bottom hem
- CPSIA tracking label compliant
- S - XL: 2 dz/case
- Imported



CLASSIC JERSEY

100% COTTON. 100% CLASSIC. CAN'T-MISS IMPRINTABLES FOR MEN, WOMEN AND YOUTH



T137
Champion® Raglan Baseball T-Shirt
Now in Four New Colors

- 5.2 oz., 100% cotton
- Tag-free neck label
- Contrast rib collar and ¾ raglan sleeves
- Exterior jocktag at left hem
- Double-needle sleeve and bottom hems
- “C” logo on left sleeve
- Oxford Gray: 90% cotton/10% polyester
- S - 3XL: 4 dz/case
- Imported



T13Y
Youth Champion®
Raglan Baseball T-Shirt

- All the qualities of T137 plus CPSIA tracking label compliant
- S - XL: 2 dz/case
- Imported

T136

BLACK/WHITE	BP
WHITE/NAVY	81
OXFORD GRAY/BLACK	88
OXFORD GRAY/NAVY	32
LIGHT BLUE/NAVY	L1
NAVY/OXFORD GRAY	68

T136
Champion® Ringer T-Shirt

- 5.2 oz., 100% cotton
- Tag-free neck label
- 1x1 rib contrast collar and sleeve ends
- Shoulder-to-shoulder neck tape
- “C” logo on left sleeve
- Oxford Gray: 90% cotton/10% polyester
- S - 2XL: 6 dz/case
- Imported



T13Y	T137	Color	Code
		BLACK	BP
		WHITE/BLACK	74
		WHITE/NAVY	81
		WHITE/TEAM BLUE	01
		WHITE/MAROON	W9
		WHITE/SCARLET	S3
		WHITE/C GOLD	G5
		WHITE/DARK GREEN	G4
		OXFORD GRAY/BLACK	88
		OXFORD GRAY/NAVY	32
		OXFORD GRAY/TEAM BLUE	08
		OXFORD GRAY/SCARLET	99
		LIGHT BLUE/NAVY	L1
		SCARLET/BLACK	S7
		OXFORD GRAY/CHARCOAL	08
		OXFORD GRAY/CHARITY PINK	0H NEW
		OXFORD GRAY/C. GOLD	06
		OXFORD GRAY/PURPLE	04



CC8C
Champion® Long Sleeve
T-Shirt

- 5.2 oz., 100% cotton
- Tag-free neck label
- Taped crew neck
- Rib knit cuffs
- Double-needle bottom hem
- “C” logo at left cuff
- S - 2XL: 3 dz/case
- Light Steel: 90% cotton/10% polyester
- Imported



T425
Champion®
Short Sleeve T-Shirt

T435
Youth Champion®
Short Sleeve T-Shirt

- 6 oz., 100% cotton
- Tag-free neck label
- Shoulder-to-shoulder neck tape
- Double-needle sleeve and bottom hems
- “C” logo on left sleeve
- Ash: 99% cotton/1% polyester; Light Steel: 90% cotton/10% polyester;
- S - XL: 6 dz/case; 2XL - 3XL: 3 dz/case; Youth S - XL: 6 dz/case
- Imported

CLASSIC JERSEY

CC8C T105 T425 T435

BLACK BK	WHITE WH	LIGHT STEEL LW	ASH/SILVER GRAY AS/SV	OXFORD GRAY OX	CHARCOAL HEATHER HL	ROYAL BLUE RB	NAVY NY	PURPLE PR	MAROON MR	RED RR	GOLD GO	ORANGE ON	DARK GREEN 14



HEAVY FABRIC FOR
EXTRAORDINARY
DURABILITY

T105
Champion®
Heritage Jersey T-Shirt

- 7 oz., 100% cotton
- 1 - inch bound ribbed crewneck
- Deep armholes
- Double-needle sleeve and bottom hems
- “C” logo on left sleeve
- Silver Gray: 99% cotton/1% polyester; Oxford Gray: 90% cotton/10% polyester
- S - 3XL: 4 dz/case
- Imported



8180
Cotton Short With Pocket **NEW!**

- 6 oz., 100% cotton jersey
- Full athletic fit
- Multi-needle elastic waistband with inside drawcord (Elastic waistband with quick-cord for 8180)
- 6 inch inseam; 9 inch inseam for 8180
- “C” logo at left hip
- Silver Gray: 99% cotton/1% polyester; Oxford Gray: 90% cotton/10% polyester
- S - 3XL: 4 dz/case
- Imported



8187
Champion®
Cotton Gym Short

BLACK BK	SILVER GRAY SV	OXFORD GRAY OX	ROYAL BLUE RB	NAVY NY	MAROON MR	SCARLET SK



COTTON SHORTS



Each time your customers order Champion® printed shirts, they can earn a cash rebate for a K-12 school. This exciting initiative includes orders for all printed shirts — corporate apparel, team uniforms, community events, sororities and fraternities, and more. Plus, there's no paperwork for you.

Hanes4Education is easy math:

- Schools can earn \$0.10 for every Champion® printed shirt ordered
- A maximum of \$500 (5,000 printed shirts) can be earned per order
- Schools may earn a maximum of \$5,000 from the Hanes4Education™ program per calendar year

See how easy it is to participate at Hanes4Education.com.

Or call Hanes4Education Customer Service at 1-877-391-5272 Monday-Friday, 8 a.m. to 5 p.m. CST.



IT'S NOT JUST WHAT WE MAKE, BUT HOW.

From our Double Dry Eco® Fleece line to reducing our energy usage 22% since 2007, HanesBrands Inc., takes sustainability as seriously as we do performance and comfort. When your customers wear our clothing, they're putting less wear on the environment. HanesBrands is also dedicated to protecting our workforce and improving the communities in which we live and work. For more information about our environment and social initiative, visit HanesforGood.com.



HanesBrands received U.S. Environmental Protection Agency Energy Star Sustained Excellence Awards for 2012, 2013, 2014, 2015 and 2016 and Partner of the Year awards in 2010 and 2011.



As You Sow, a corporate responsibility advocacy group, gave "A" grades to HanesBrands for its code of conduct, compliance auditing, remediation and transparency.



HanesBrands has used over \$1 million in cash generated from the sale of recyclable materials to fund dozens of community development projects around the globe.



HanesBrands is one of only 3 apparel and shoe manufacturers to receive an "A" grade from this independent research tool.

NEW FOR 2017



ORIGINALS
EST • 1919

TRIBLEND



Black BK



Charcoal Heather HL



Oxford Gray OX



Oatmeal Heather ZT



Blue Jazz Heather BF



Athletic Royal Heather A9



Navy Heather N2



Carmine Red Heather RT



Green Luck Heather GK



Lotus Pink Heather Y8



White WH

SOFT-WASH



Black BK



Charcoal Heather HL



Oxford Gray OX



Blue Jazz Heather BF



Athletic Royal Heather A9



Navy Heather N2



Carmine Red Heather RT



Green Luck Heather GK



White WH

SLUB



Black BK



Charcoal Heather HL



Oxford Gray OX



Oatmeal Heather ZT



Blue Jazz BJ



Athletic Royal UF



Navy NY



Carmine Red RF



Green Luck GG

FLEECE



Black BK



Charcoal Heather HL



Oxford Gray/Oatmeal Heather ZZ



Oatmeal Heather/Oxford Gray ZX



Blue Jazz Heather BF



Navy Heather N2



Carmine Red Heather RT



Green Luck Heather GK

FRENCH TERRY



Black BK



Charcoal Heather HL



Oxford Gray/Oatmeal Heather ZZ



Oatmeal Heather/Oxford Gray ZX



Blue Jazz Heather BF



Navy Heather N2



Carmine Red Heather RT



Lotus Pink Heather Y8



AUTHENTIC ORIGINALS
2017 COLORS

		A0200	A0250	A0300	A0380	A0500	A0600	A0700	A0350	A0400	A0550	A0650	A0750
		Soft-Wash T-Shirt	Soft-Wash Pocket T-Shirt	Triblend Varsity T-Shirt	Long Sleeve Slub Henley	Sueded Fleece Crew	Sueded Fleece Pullover Hood	Sueded Fleece Jogger	Women's Triblend Varsity T-Shirt	Women's Triblend Swing Tank	Women's French Terry Crew	Women's French Terry Zip Hood	Women's French Terry Jogger
White	WH	W	W	W					W	W			
Oxford Gray/Oatmeal Heather	OX/ZZ												
Black	BK												
Blue Jazz	BJ												
Athletic Royal	UF												
Navy	NY												
Carmine Red	RF												
Green Luck	GG												
Oatmeal Heather/Oxford Gray	ZT/ZX												
Charcoal Heather	HL												
Blue Jazz Heather	BF												
Athletic Royal Heather	A9												
Navy Heather	N2												
Lotus Pink Heather	Y8												
Carmine Red Heather	RT												
Green Luck Heather	GK												

1.800.685.7557 championlocator.com

The decoration of any Champion® garment with the proprietary marks, names, or logos of any collegiate sports team or collegiate institution is expressly prohibited.

