



MERCER+METTLE™

FALL

2023



# LIFESTYLE MEETS WORK STYLE

Work-life balance is out. Work-life harmony is here to stay.

Dress codes have been disrupted, schedules can be stretched and work can now be done from anywhere. Today's employees have more control over their time and their wardrobe than ever.

Mercer+Mettle is made to meet them where they are: a collection of versatile essentials inspired by the newfound freedom and flexibility to work and live as we want.

Made with high-quality fabrics and designed to move effortlessly from work to play, day to night and place to place, this collection puts the individual in the spotlight and gives them the room to show the world what they're made of.











# MADE FOR YOU TO MAKE IT YOUR OWN

Step into your unique point of view.

Mercer+Mettle offers the appeal of a cohesive uniform collection achieved across an array of intentionally designed styles.

For brands and businesses appealing to a trend-conscious clientele and who recognized the benefit of encouraging self-expression.

CORPORATIONS | HOSPITALITY | TECH/START-UPS | SALES  
TRADE SHOWS | EMPLOYEE STORE





# TRENDS + WORKFORCE SHIFTING

The increasing demand for clothing that suits the ever-evolving workforce.

GLOBAL RESEARCH CONCLUDES THAT  
A UNIFORM'S STYLE AND COMFORT CONTRIBUTE TO  
EMPLOYEE ON-THE-JOB SATISFICATION.

“

Surveys on popular fashion blogs have overwhelmingly shown that our newfound freedom in choosing and wearing what pleases us has become a non-negotiable in our lives.”

Vicki Ostrom, Lead Trend Analyst

82%

OF EMPLOYEES  
WANT TO BE  
SEEN AS AN  
INDIVIDUAL, NOT  
JUST A WORKER.

Source: Dec 2022 Gartner  
“Future of Work Trends”

Millennials and Gen Z are on the verge of becoming the majority in the US workforce, currently accounting for more than 46% of workers.

1 in 4

18- to 24-year-olds would only apply for a job at a business with a modern stylish uniform.





VERSATILE WOSENS

# FOR WORK DAYS + WEEKENDS







“

A timeless staple reinterpreted for the needs of the modern worker, reflecting the shift toward more casually tailored looks.”



ADDING LAYERS OF

# FUNCTION + PERFORMANCE

High-performing puffy jackets and vests provide warmth when you need it and a style that transitions from downtown to out-of-town with ease.







# WHAT'S IN STYLE? YOU.

## ONE PIECE + THREE WAYS

A spotlight on the most versatile pieces made  
to express the wearer's unique sense of style.



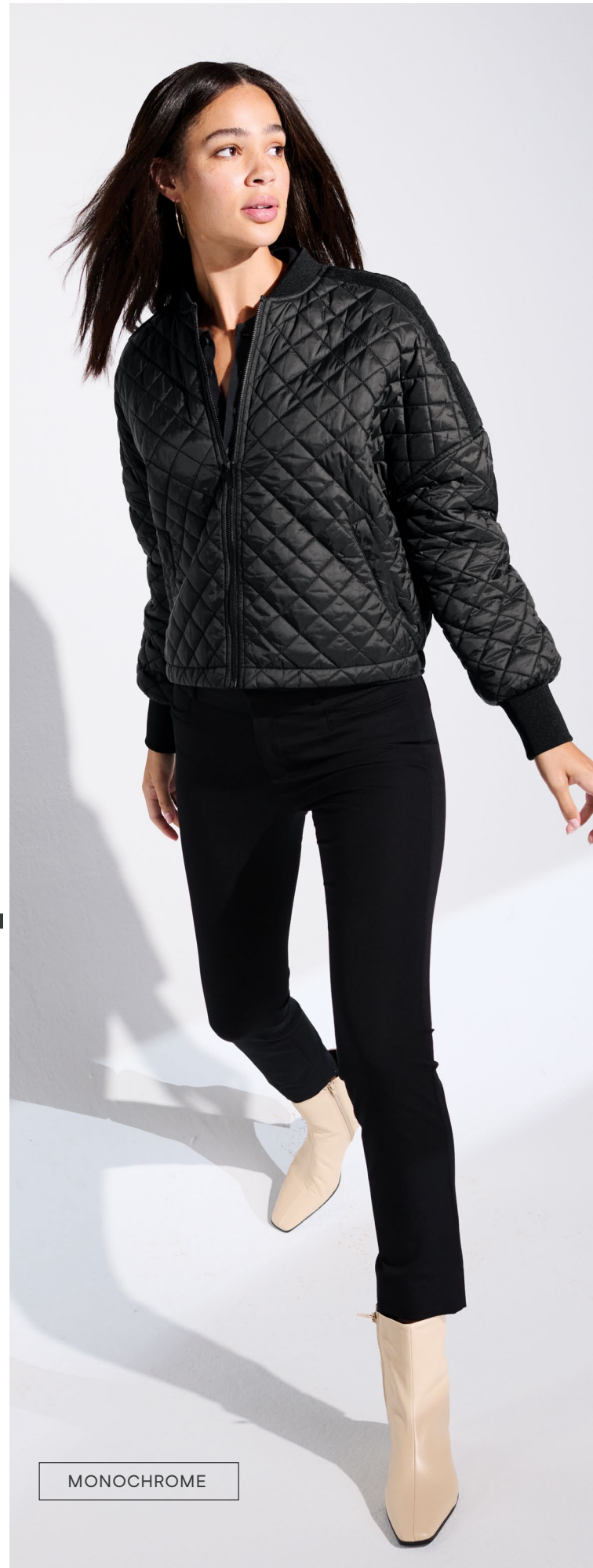




ONE PIECE + THREE WAYS

# THE BOXY QUILTED JACKET

For an essential that goes beyond the basics, look no further than this diamond-quilted jacket made for day-to-night wear.



MONOCHROME





THE NEW POWER SUIT



OFFICIALLY OFF-DUTY





SPORT LUXE



EASY STREET

ONE PIECE + THREE WAYS

# THE SNAP FRONT JACKET

Meet the shacket, a versatile blend of  
laid-back comfort and dressed-up style,  
ready-made to make it your own.

FORMAL FRIDAYS







ONE PIECE + THREE WAYS

# THE CAMP BLOUSE

Taking a more modern approach to tailoring,  
the fabric and fit are made for movement and ease.

BLANC DE BLANC



# WHAT'S TRENDING NOW: MOBILE LIFESTYLE

Today, work can happen wherever you are. Streamlined, polished bags and backpacks are here to carry you through day and night.







Flex your style with straps that transition from backpack to tote in seconds.





GO

ANYWHERE

DO

EVERYTHING

BEE

ANYTHING







LONG SLEEVE STRETCH  
WOVEN SHIRT

MM2000



WOMEN'S LONG SLEEVE  
STRETCH WOVEN SHIRT

MM2001

WORK-LIFE BALANCE IS OUT.  
WORK-LIFE HARMONY IS IN.





WOMEN'S STRETCH CREPE  
LONG SLEEVE CAMP BLOUSE

MM2013

# EFFORTLESS STYLE



WOMEN'S STRETCH CREPE  
3/4-SLEEVE BLOUSE

MM2011





STRETCH PIQUE  
FULL-BUTTON POLO

MM1006



STRETCH PIQUE  
HENLEY

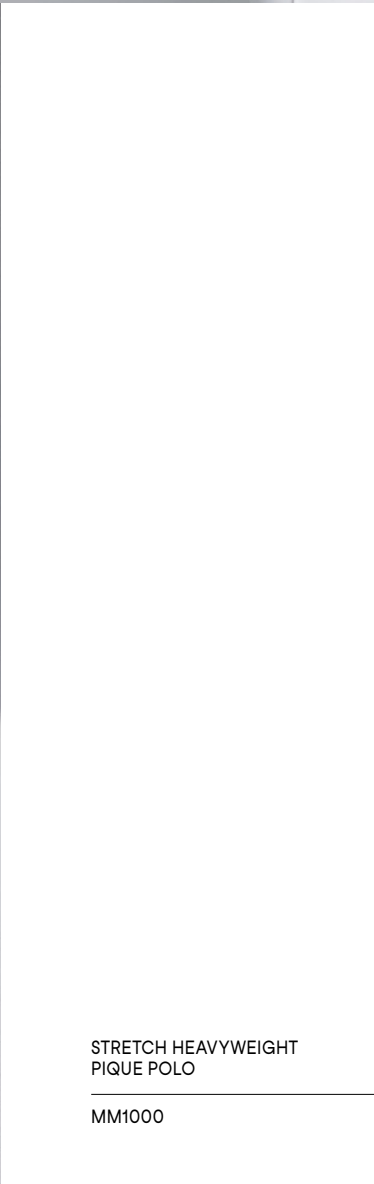
MM1008



WOMEN'S STRETCH  
HEAVYWEIGHT  
PIQUE POLO

---

MM1001



STRETCH HEAVYWEIGHT  
PIQUE POLO

---

MM1000





STRETCH JERSEY POLO

MM1014



WOMEN'S STRETCH  
JERSEY POLO

MM1015



STRETCH JERSEY CREW

MM1016



WOMEN'S STRETCH JERSEY  
RELAXED SCOOP

MM1017

“

Soft jersey blend for subtle drape and a smooth hand.  
Moisture wicking and intentional details lend  
cool vibes, all around.”





OPEN FRONT  
CARDIGAN SWEATER

MM3023



1/4-ZIP SWEATER

MM3020





# LIFE + STYLE

STRETCH 1/4-ZIP PULLOVER

MM3010





WOMEN'S STRETCH  
OPEN-FRONT CARDIGAN

MM3015





WOMEN'S STRETCH  
DROP SHOULDER PULLOVER

MM3013



DOUBLE-KNIT SNAP  
FRONT JACKET

MM3004





LONG SLEEVE TWILL  
OVERSHIRT

MM2020





WOMEN'S LONG SLEEVE  
Twill OVERTSHIRT

MM2021





DOUBLE-KNIT FULL-ZIP HOODIE

MM3002



DOUBLE-KNIT BOMBER

MM3000



WOMEN'S  
DOUBLE-KNIT BOMBER

MM3001





WOMEN'S STRETCH  
SOFT SHELL JACKET

MM7103



# POLISH + PERFORMANCE



STRETCH SOFT SHELL  
JACKET

MM7102





# FORM +

FAILLE SOFT SHELL

MM7100





WOMEN'S WATERPROOF  
RAIN SHELL

MM7101



# FUNCTION





WATERPROOF RAIN SHELL

MM7000



# READY FOR ANYWHERE

WATERPROOF  
RAIN SHELL

MM7001







WOMEN'S BOXY QUILTED JACKET

MM7201





QUILTED FULL-ZIP JACKET

MM7200





# PROFESSIONAL + PERFORMANCE

WOMEN'S PUFFY PARKA

MM7213



PUFFY JACKET

MM7210







PUFFY VEST

MM7214



WOMEN'S PUFFY VEST

MM7217

“

With a design that easily transitions from office to street to home, and a soft, supple hand, these cold-weather layers are luxurious and high-performing.”





# NEAR + FAR

PACK

MMB200



RUCKSACK

MMB201



WEEKENDER DUFFEL

MMB800



CONVERTIBLE TOTE

MMB202



UTILITY CASE

MMB700





MERCER+METTLE™



SANMAR

800.426.6399 | SANMAR.COM