

ADAMS[®]
NEW YORK • PARIS • MILAN
2023 - 2024



Forward-Thinking Styles from a History Steeped in Quality, Comfort and Value

For three decades Adams Headwear has diligently established a legacy known for impeccable quality, superior fit, extensive color palettes and fashion-forward styling. This is evident in our highly sought-after Optimum collection where Adams leads the pack in pigment-dyed, garment-washed fabrics. Now offering 44 eye-catching colors, combined with high quality signature features that are sure to impress: Genuine Nubuck leather strap, Cool-Crown™ mesh lining and deep crown for better fit and comfort. Adams is also well recognized for our wide selection of high-quality performance moisture wicking, UV protection and soil release fabrics that rise above the competition. Going above and beyond is what Adams does best!

Whether classic or contemporary, when shopping with Adams, you're sure to find the style you desire for any activity, special event or promotion. We do headwear like no other and confidently offer it with excellent customer service, delivering you the product you desire. Adams hats are print and embroidery friendly in whatever suits your workplace, your business or your personal style. With quality that lasts and colors that hold, your art is perfectly projected and protected on Adams Fashion Headwear.

NEW FOR 2023

For 2023, we're introducing two new styles:



STYLE AM101 - AMERICANA

A fun addition to our exciting novelty patriotic hat collection. With a tip of your visor, show your patriotic support in our low-profile cap adorned with the American flag motif under visor. *See more about this style on page 36.*



STYLE CN101 - CONTENDER

A decorator's dream. Features the sought-after buckle that snaps on and off for quick embroidery and easy adjustment for the perfect fit, available in seven popular colors. *See more about this style on page 20.*

In addition to offering two new styles this year that are sure to be well received, we've added a variety of colors to our tried and true styles.



STYLE LP101 - OPTIMUM

See more about this style on page 02.



Grape*



STYLE PV112 - EPIC

See more about this style on page 24.



Black/Black



Grey/Hot Pink



Grey/Grey



Navy/Navy



Charcoal/Neon Yellow



STYLE OL102 - OLLIE

See more about this style on page 12.



Olive



Digital Camo



Tie Dyed Brown



STYLE GC102 - GAME CHANGER

See more about this style on page 10.



Nautical Red



Hot Pink



Grape*

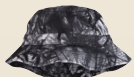


STYLE VA101 - VACATIONER

See more about this style on page 14.



Tie Dyed
Navy



Tie Dyed
Black



Tie Dyed
Light Blue

*New color Grape not available until after 7/1/2023.

OUR MOST POPULAR HAT:



The Optimum

PIGMENT-DYED PERFECTION

**New color Grape not available until after 7/1/2023.*



NEW Grape



Apple



Aqua



Baby Blue



Black



Burgundy



Cactus



Caribbean Blue *



Chamois



Charcoal



Coral



Dusk



Espresso



Forest *



Hot Pink *



Ivory



Khaki *



Lemon *



Lime *



Midnight Blue



Mississippi Mud



Mulberry



Mustard



Nautical Red *



Navy *



Neon Green



Neon Pink



Neon Yellow



Olive



Pale Pink *



Periwinkle *



Poppy



Purple



Raspberry



Red



Royal



Seafoam



Spruce Green



Stone



Tangerine *



Teal



Terracotta



White *



Wild Plum



The Cool-Crown™ mesh liner is designed to promote cooling and minimize staining.



Rear View

Garment Washed, Pigment Dyed

STYLE LP101 - OPTIMUM PIGMENT DYED

See previous page for 44 available colors

Call for Pricing

Fabric:

› 100% cotton twill, garment washed, pigment dyed

Key Features:

- › Six panel, unstructured, low profile
- › Tuck away Nubuck leather strap, antique brass buckle and grommet
- › Dyed-to-match sewn eyelets, four rows of stitching on dyed-to-match self-fabric sweatband
- › Adams exclusive Cool-Crown™.

STYLE KO101 - YOUTH OPTIMUM PIGMENT DYED

Colors available in Youth Style KO101 are noted * on previous page.

Call for Pricing



Youth Style KO101

This is the youth-size version of the LP101. The mesh lining is not available on this style.

Cool-Crown™



The Cool-Crown™ mesh liner is designed to promote cooling and minimize staining.



Antique Brass Buckle and Tuck-In Grommet

The Optimum Khaki Crown



Khaki/Coral



Khaki/Royal



Khaki/Aqua



Khaki/Midnight Blue



Khaki/Teal



Khaki/Purple



Khaki/Black



Khaki/Charcoal



Khaki/Navy



Khaki/Burgundy



Khaki/Forest



Khaki/Cactus



Khaki/Spruce Green

STYLE LP102 - OPTIMUM KHAKI CROWN

Fabric:

› 100% cotton twill, garment washed, pigment dyed

Key Features:

- › Six panel, unstructured, low profile
- › Tuck away Nubuck leather strap, antique brass grommet and buckle
- › Adams exclusive Cool-Crown™ mesh lining
- › Four rows of stitching on self-fabric sweatband and sewn eyelets
- › Khaki crown with contrast color bill and button
- › **Call for Pricing**

Cool-Crown™



The Cool-Crown™ mesh liner is designed to promote cooling and minimize staining.



Antique Brass Buckle and Tuck-In Grommet

The Optimum Stone Crown



Forest



Black



Royal



Navy

STYLE LP103 - OPTIMUM STONE CROWN

Fabric:

› 100% cotton twill, garment washed, pigment dyed

Key Features:

- › Six panel, unstructured, low profile
- › Tuck away Nubuck leather strap, antique brass grommet and buckle
- › Adams exclusive Cool-Crown™ mesh lining
- › Four rows of stitching on self-fabric sweatband and sewn eyelets
- › Stone crown with contrast color bill and button
- › **Call for Pricing**



Rear View

Cool-Crown™



The Cool-Crown™ mesh liner is designed to promote cooling and minimize staining.



Antique Brass Buckle and Tuck-In Grommet



The Optimum Ivory Front



Caribbean Blue



Black



Neon Pink



Seafoam

STYLE LP106 - SPINNAKER

Fabric:

› 100% cotton twill, garment washed, pigment dyed

Key Features:

- › Six panel, unstructured, low profile
- › Two front panels are contrast color, visor color matches back panels
- › Matching color sewn eyelets, button matches visor/back panels
- › Matching color self-fabric sweatband
- › Tuck away Nubuck leather strap, antique brass buckle and grommet
- › Four rows of stitching on dyed-to-match self-fabric sweatband
- › Adams exclusive Cool-Crown™ mesh lining
- › **Call for Pricing**



Essential Casual Comfort



Royal



White



Navy



Forest



Black



Coral



Seafoam



Nautical Red



Charcoal



Stone



Caribbean Blue



STYLE EP101 - ESSENTIALS PIGMENT DYED

Fabric:

› 100% cotton twill, garment washed, pigment dyed

Key Features:

- › Six panel, low profile, unstructured
- › Self-fabric, end-over-end hook and loop closure
- › Pre-curved bill, sewn eyelets
- › **Call for Pricing**



The Cool-Crown™ mesh liner is designed to promote cooling and minimize staining.

The Optimum Smaller Ladies' Fit



Neon Green



Pale Pink



Ivory



White



Coral



Seafoam



Rear View

STYLE LO101 - LADIES' OPTIMUM

Fabric:

› 100% cotton twill, pigment dyed, garment washed

Key Features:

- › Six panel, low profile, unstructured
- › Ladies' fit with shorter visor, smaller circumference and less depth
- › Adams exclusive Cool-Crown™ mesh lining
- › Self-fabric back closure with antique brass buckle and grommet
- › Self-fabric sweatband with four rows of stitching, matching color eyelets
- › **Call for Pricing**



Neon Yellow

Cool-Crown™



The Cool-Crown™ mesh liner is designed to promote cooling and minimize staining.



Antique Brass Buckle and Tuck-In Grommet

Extended Visor
for added sun protection



Charcoal



Khaki



White



Forest



Navy

STYLE SB101 - SUNBUSTER

Fabric:

› 100% cotton twill, pigment dyed, garment washed

Key Features:

› 3 3/4" visor provides added sun protection

› Six panel, low-profile, leather strap with antique brass buckle

› Adams exclusive Cool-Crown™ mesh lining

› **Call for Pricing**

NEW
COLORS

A Real Game Changer



STYLE GC102 - GAME CHANGER

Fabric:

- › 100% cotton twill, pigment dyed and garment washed front panels and visor
- › 100% nylon mesh ivory back panels

Key Features:

- › Six panel, unstructured, low-profile, pre-curved visor
- › Contrast stitching on front panels, visor matches ivory back panels
- › Contrast color self-fabric strap back with adjustable antique brass slider matches front panels
- › **Call for Pricing**

*New color Grape not available until after 7/1/2023.



Five Panel, Snap Back



Charcoal/Red/Grey



Charcoal/Black/Grey



Charcoal/Royal/Grey



Charcoal/Mustard/Grey



Charcoal/Caribbean Blue/Grey



Charcoal/Coral/Grey



Charcoal/Seafoam/Grey



Charcoal/Hot Pink/Grey



Charcoal/Pale Pink/Grey

STYLE EN102 - ENDEAVOR

Fabric:

- › 100% cotton twill, pigment dyed, garment washed
- › Charcoal grey front panel with light grey nylon mesh back panels

Key Features:

- › Five-panel, unstructured low-profile crown
- › Contrast color visor, light grey twill under visor matches seam tape
- › Raised contrast color stitching on top visor matches front panels
- › Grey plastic snap-back back closure
- › Sewn contrast-color eyelets, matches visor and top button
- › Light grey cotton twill sweatband with four rows of stitching
- › **Call for Pricing**



Rear View

NEW
COLORS



STYLE OL102 - OLLIE

Fabric:

- › 100% cotton front panels and visor, pigment-dyed, garment-washed front panels
- › 100% nylon mesh back panels

Key Features:

- › Six panel, mid-crown, structured, traditional nylon mesh back panels are always tan
- › Distressed torn visor, cotton twill sweatband, matching color snap-back closure
- › **Call for Pricing**



Rear View

Distressed at its Best



NEW Tye Dyed Brown



NEW Digital Camo



NEW Olive



Nautical Red



Light Denim



Forest Green



Midnight Navy



Burgundy



Baby Blue



Black



Purple



Royal



Khaki



Neon Pink



Seafoam



Dark Denim



Coral



Teal



Cactus/Black



Navy/Burgundy



Navy/Tangerine



Black/Mustard



Jungle Camo



Hardwoods Camo



Charcoal



Mississippi Mud

NEW
COLORS



Pack & Go Crushable Bucket



NEW Tie Dyed
Black



NEW Tie Dyed
Light Blue



NEW Tie Dyed
Navy



Caribbean
Blue



Forest



Nautical
Red



Seafoam



Khaki



Navy



White



Tangerine

STYLE VA101 - VACATIONER

Fabric:

› 100% cotton twill, pigment dyed, garment washed

Key Features:

› Crushable bucket-style

› Sewn eyelets

› Available in sizes L - 59 cm (7 3/8") and XL - 61 cm (7 5/8")

› **Call for Pricing**



4" Wide Floppy Brim
excellent sun protection



Stone



Hot Pink

STYLE SL101 - LADIES' SEA BREEZE

Fabric:

› 100% cotton twill, pigment dyed, garment washed

Key Features:

- › Three panel, ladies' silhouette
- › 4" wide floppy brim for excellent sun protection
- › Cool-Crown™ mesh lining
- › Available in sizes S/M - 56 cm (7") and L/XL - 58 cm (7 1/4")
- › **Call for Pricing**

Drift Away in Style



Midnight Blue



Stone



Black



Forest



Nautical Red



Royal



Coral



Seafoam



Lemon



Mississippi Mud



Rear View

STYLE DV101 - DRIFTER

Fabric:

› 100% cotton twill, pigment dyed, garment washed

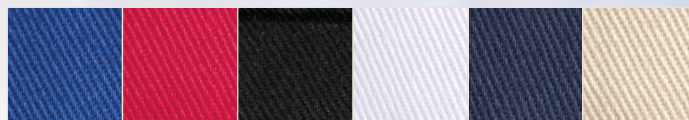
Key Features:

- › 2 1/4" crown, three panel visor
- › Heavy distressing on visor and band
- › Self-fabric sweatband with four rows of stitching
- › Self-fabric end-on-end hook and loop closure
- › **Call for Pricing**



Keeping You Cool

Absorbant Terry Sweatband



Royal

Red

Black

White

Navy

Khaki

STYLE AC101 - ACE

Fabric:

› 100% cotton twill visor, vat-dyed true color, garment washed

Key Features:

- › 2 1/4" crown
- › Three panel, pre-curved visor
- › Self-fabric hook and loop closure
- › Black absorbent terry cloth sweatband
- › Black under visor reduces glare
- › **Call for Pricing**



Contrasting Color
Under Bill of AC101

Cool-Crown™



The Cool-Crown™ mesh liner is designed to promote cooling and minimize staining.



Antique Brass Buckle and Tuck-In Grommet

The Optimum in True Color



Charcoal Grey



Burnt Orange



Royal



Stone



Black



Red



Purple



Maroon



Butter



Forest



Grey



Navy



Pink



Rear View

STYLE LP104 - OPTIMUM II TRUE COLOR

Fabric:

› 100% cotton twill, vat dyed for true color

Key Features:

- › Six panel, unstructured, low profile
- › Tuck away Nubuck leather strap
- › Antique brass grommet and buckle
- › Adams exclusive Cool-Crown™ mesh lining
- › Six tone-on-tone eyelets on crown

› **Call for Pricing**



The Cool-Crown™ mesh liner is designed to promote cooling and minimize staining.

Enzyme Washed True Color



Black



Navy



White



Khaki

STYLE PN101 - PINNACLE

Fabric:

› 100% cotton twill, enzyme wash, true color

Key Features:

- › Six panel, low-profile, unstructured
- › Solid color crown and matching color visor
- › Matching color, self-fabric sweatband,
- › Matching color sewn eyelets, hook and loop back closure
- › Adams exclusive Cool-Crown™ matching color mesh lining
- › **Call for Pricing**



Rear View

NEW
STYLE



A Decorator's Dream



Rear View



Forest



Black



Burgundy



White



Navy



Red



Khaki



Buckle snaps off and on
for easy decoration

STYLE CN101 - CONTENDER

Fabric:

› 100% cotton enzyme wash, mid-weight twill

Key Features:

- › Mid-crown structured, low-profile crown
- › Enzyme washed solid true color twill crown and visor with matching color under visor and seam tape
- › Pre-curved visor and Adams flag label at the back arch
- › Sewn matching color eyelets and matching self-fabric sweatband with four rows of stitching
- › Matching color self-fabric strap back closure, snap on/off sliding silver buckle (excess strap tucks into a silver grommet)
- › **Call for Pricing**



Soft Lightweight Essential



Navy

White

Baby
Blue

Lemon

Stone

Black

Red

Royal



Rear View

STYLE EB101 - ESSENTIALS BRUSHED

Fabric:

› 100% cotton brushed twill, vat dyed for true color

Key Features:

- › Six panel, low profile, unstructured
- › Self-fabric closure with antique brass slider and hidden tuck-in pocket
- › Pre-curved bill, sewn eyelets
- › **Call for Pricing**



Fabric Detail



Distressed Ripstop



Pink



Royal



Khaki



Navy



White



Red



Olive



Grey



Burgundy



Aqua



Black



Digital Green
Camo



Rear View

STYLE IM101 - IMAGE MAKER

Fabric:

› 100% cotton, Ripstop fabric, heavy enzyme wash

Key Features:

- › Six-panel, unstructured, low-profile, heavy distressing on visor
 - › Matching color, self-fabric strap with silver grommet and buckle
 - › Self-fabric color under visor, matching color eyelets, sweatband and seam tape
 - › Matching color, heavy raised stitching on crown and visor, pre-curved visor
- › **Call for Pricing**



Distressed to Impress



Khaki/Maroon



Red/Black



Black/Khaki



Navy/Black



Charcoal/Black



Navy/Khaki

STYLE RM102 - RAMBLER

Fabric:

- › 100% cotton twill with heavy enzyme washing

Key Features:

- › Six panel, unstructured two-tone low-profile crown
- › Heavy enzyme wash, matching self-fabric under visor, seam tape matches back panel color
- › Self-fabric top button matches back panel color
- › Raised heavy white contrast color top stitching, pre-curved standard visor with heavy distressing
- › Self-fabric back closure cloth matches back panels, silver buckle and tuck in grommet
- › Sewn contrast white eyelets matching raised stitching
- › Matching color twill fabric sweatband
- › **Call for Pricing**



Rear View

NEW
COLORS

Superior Fit, Affordable Price



NEW Grey/Grey



NEW Navy/Navy



NEW Grey/Hot Pink



NEW Charcoal/
Neon Yellow



NEW Black/Black



Forest/Khaki



Navy/White



Burgundy/Khaki



Black/White



Khaki/Black



Red/White



Charcoal/Black



Royal/White



Charcoal/White



Black/Charcoal

STYLE PV112 - EPIC

Fabric:

- › 65% polyester/35% cotton crown and visor
- › Nylon back panels

Key Features:

- › Slightly curved visor
- › Six panel, structured
- › Rounded mid-pro crown with matching eyelets
- › Snap-back closure
- › **Call for Pricing**



Rear View



Premier Heather Snap Back



Charcoal/Black



Charcoal/White



Slate/Red



Slate/Navy

STYLE PV102 - PREMIER

Fabric:

› 95% polyester/5% Spandex® heather woven suit fabric front panels and visors

Key Features:

- › Six panel, structured, pro-mid crown, wider semi-flat visor
- › Four panel contrast color soft nylon mesh back
- › Self-fabric under visor, matching color seam tape
- › Top button matches front panels and visor color
- › Matching color plastic snap back closure, sewn matching color eyelets
- › Performance mesh sweatband, matches nylon back panel colors

› **Call for Pricing**



Rear View



Fabric Detail



Heather Texture, Visual Appeal



Charcoal



Copper



Light Blue



Tan



Pale Pink



Rear View

STYLE DX101 - DELUXE

Fabric:

› 95% polyester/5% spandex heather woven suit fabric

Key Features:

› Six panel, structured, mid-profile, matching color under visor, matching color sweatband

› Matching color seam tape, eyelets and top button

› Self-fabric strap with silver buckle and grommet

› **Call for Pricing**



Moisture Wicking at its Best



Black



Charcoal



Burgundy



Navy



Royal



Red



White



Forest



Raspberry

STYLE VE101 - VELOCITY

Fabric:

- › 100% polyester performance mesh

Key Features:

- › Six panel, structured solid mid-crown
- › Technical performance fabric promotes moisture management/UV protection
- › Matching color self-fabric under visor
- › Matching color seam tape and self-fabric top button
- › Self-fabric strap hook and loop closure and comfortable elastic loop
- › Sewn matching color eyelets, matching color technical performance mesh sweatband
- › **Call for Pricing**



Rear View



Side Detail

Go-with-the-Flow Style



Black



Charcoal



Stone



Bimini Blue



Red



Navy



White



Royal



Salmon



Neon Yellow

STYLE PF101 - PRO-FLOW

Fabric:

› 95% polyester/5% spandex technical moisture-wicking, anti-microbial fabric

Key Features:

- › UV protective and water/stain-repellant coating, six panel, structured, mid-profile
- › Laser ventilation holes in pattern on side panels
- › Self-fabric strap hook and loop closure and comfortable elastic loop, Adams rubber patch on strap
- › Under visor matches crown
- › Moisture management technical grey fabric sweatband
- › Matching color seam tape and matching color top button, no eyelets
- › **Call for Pricing**



Rear View



Inside View

Cool Comfort, Lightweight Performance



Navy



White



Black



Light Blue



Pale Pink



Grey



Rear View

STYLE TH101 - TRIUMPH

Fabric:

- › 100% polyester micro Jacquard performance mesh

Key Features:

- › Solid-color crown and visor, six panel, unstructured, mid-crown, two-ply fabric
- › Moisture-wicking grey mesh sweatband
- › Matching color sewn eyelets , pro top stitch at base of crown
- › Anti-glare, grey fabric under visor
- › Self-fabric, matching color hook and loop closure

› **Call for Pricing**



The Cool-Crown™ mesh liner is designed to promote cooling and minimize staining.



Contrast Color Sandwich Visor



Red/Black



Navy/Khaki



Khaki/Black



Forest/Khaki



White/Black



Black/Khaki



Royal/White



Grey/Black



Orange/Navy



Bimini Blue/White



Neon Green/White



Rear View

STYLE PE102 - PERFORMER

Fabric:

› 100% polyester brushed microfiber, moisture-wicking fabric

Key Features:

› Six panel, mid-profile, structured, matching sewn eyelets

› Contrast color sandwich visor

› White soft mesh Cool-Crown™ nylon lining, self-fabric hook and loop closure

› **Call for Pricing**



Performance Two Stripe Mesh Back



Black/White



Grey/White



Navy/White



Pink/White



Royal/White



Rear View



Rear View



Rear View



Rear View



Rear View

STYLE PE105 - CLUBHOUSE

Fabric:

- › 100% brushed performance microfiber polyester
- › Two soft mesh back panels

Key Features:

- › Vertical, two-stripe contrast detail down center of mesh back panels
- › Six panel, structured, mid-profile crown, pre-curved visor
- › Contrast color, self-fabric, end-on-end hook and loop closure matches front four panels
- › **Call for Pricing**



Fabric Detail



Heather Soft Mesh Back



Red/White



Denim Blue/White



Electric Blue/White



Purple/White



Burgundy/White



Teal/White



Black/White



Rear View

STYLE KN102 - KNOCKOUT

Fabric:

› 80% polyester/17% cotton/3% spandex, heather front panels and visor

Key Features:

- › Six panel, structured, two-tone, mid-profile
- › White soft nylon mesh back panels
- › Contrast color heather front panels and top of visor
- › Seam tape matching visor color, top button matches front panels
- › Hook and loop self-fabric back closure
- › Nylon stretch sweatband, matching color eyelets and pre-curved visor
- › **Call for Pricing**

Two-Tone Soft Mesh Snap Back



Charcoal/Neon Pink



Charcoal/Neon Yellow



Charcoal/Neon Berry



Charcoal/Neon Green



Charcoal/Neon Orange



Charcoal/Sky Blue



Charcoal/Red



Charcoal/Black



Charcoal/White



Charcoal/Royal



Rear View

STYLE PR102 - PRODIGY

Fabric:

- › 100% brushed cotton, mid-weight twill crown and visor
- › 100% soft nylon mesh back panels

Key Features:

- › Six panel, structured, mid-profile, two-tone Charcoal front panels/visor
- › Contrast color back mesh panels, contrast color top stitching on visor
- › Contrast color Charcoal snap-back plastic closure matches front panels
- › Matching color under visor, eyelets, seam tape and button
- › Charcoal grey twill sweatband on all colors, semi-flat visor

› **Call for Pricing**

Horizontal Two Stripe Mesh Back



Burgundy



Royal



Red



Navy



Pink



Black



Purple



Forest



Rear View

STYLE HT102 - HERITAGE

Fabric:

- › 100% cotton twill front panels and visor
- › Soft mesh nylon back panels

Key Features:

- › Six panel, unstructured low-profile crown
- › Heavy enzyme wash, two contrast color stripes on soft mesh side panels
- › Matching color self-fabric under visor, matching color seam tape
- › Matching color self-fabric top button, heavy raised contrast color stitching
- › Self-fabric strap-back with contrast stitching, silver sliding buckle and tuck-in tunnel
- › Sewn matching color eyelets
- › Matching color self-fabric sweatband
- › **Call for Pricing**

Low Profile, Snap Back



Navy/Red/Patriotic



Red/Navy Plaid



Forest/Navy Plaid



White/Black Plaid



Grey



Royal



Red



Black



White



Navy



Olive/Tan



Lavender/Tan



Seafoam/White



Rose/White



Charcoal/Light Grey



Burgundy



Rear View

STYLE VB101 - VIBE

Fabric:

- › 100% cotton, mid-weight twill front panels and visor
- › 100% nylon mesh back panels

Key Features:

- › Six panel, unstructured, low-profile, heavy enzyme wash except on plaids
- › Dyed-to-match snap-back closure, seam tape matches mesh back
- › Self-fabric matching color sweatband, matching color eyelets and pre-curved visor
- › **Call for Pricing**



Americana Styling



Navy



Under Visor Print

STYLE AM101 - AMERICANA

Fabric:

- › 100% cotton twill, mid-weight fabric

Key Features:

- › Unstructured, six-panel, low-profile solid-color crown and visor
- › Matching color top button, sweatband and seam tape
- › Pre-curved visor features a printed flag motif underneath
- › Self-fabric strap back closure
- › Excess strap tucks into a silver grommet
- › **Call for Pricing**



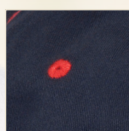
Rear View



Patriotic Fashion



Navy/Red



Contrast
Red Eyelets



Repeating
Flag Design

STYLE PA102 - PATRIOT

Fabric:

- › 100% brushed cotton twill

Key Features:

- › Six panel, mid-profile, structured, stars and stripes sandwich visor
- › Navy crown with contrast red eyelets and button
- › USA flag label at bottom of back arch
- › Self-fabric hook and loop closure
- › **Call for Pricing**



Navy/Red

STYLE NT102 - THE NATIONAL

Fabric:

- › 100% cotton twill

Key Features:

- › Six panel, mid-crown, structured
- › Contrast color sandwich visor with white piping on visor edge
- › USA embroidered on left corner of visor
- › Self-fabric, end-on-end hook and loop closure
- › Contrast color sewn eyelets and button
- › **Call for Pricing**



Soft Mesh Comfort



Royal/Black



Purple/Black



Red/Black



Navy/White



Maroon/White



Black/White



Forest/White

STYLE FA102 - FAIRWAY

Fabric:

- › 100% washed cotton twill front panels and visor
- › 100% polyester soft mesh back panels

Key Features:

- › Six panel, mid-crown, structured with hook and loop closure
- › Matching color top button and sewn eyelets
- › Contrast color stitching on visor, contrast color self-fabric sweatband
- › Self-fabric matching color under visor
- › **Call for Pricing**



Rear View



Tri-Color Technical Performance Mesh



Black/Red/White



Navy/Red/White



Red/Black/White



Charcoal/Black/White



Rear View

STYLE DP102 - FIRST STRING

Fabric:

› 100% performance polyester Dobby® fabric

Key Features:

- › Six panel, mid-crown, structured
- › Two contrast color inserts on top visor
- › Contrast color piping on two front panels and on visor inserts
- › Self-fabric sweatband, matching color hook and loop closure
- › Contrast color under visor, matching sewn eyelets
- › **Call for Pricing**



Safety First High-Visibility & Reflective Fabric



Hi-Vis Yellow



Hi-Vis Orange



Navy



Reflective fabric
hook and loop closure

STYLE RF102 - REFLECTOR

Fabric:

- › 100% polyester (navy is 100% cotton twill)

Key Features:

- › Six panel, structured, mid-profile
- › High-visibility color crown with reflective grey inserts on side panels and trim on visor
- › Reflective fabric on hook and loop back strap
- › Matching grey under visor and sweatband
- › Hook and loop closure
- › Hi-Vis colors meet ANSI Class 2 standards
- › Navy color meets enhanced visibility standards
- › **Call for Pricing**



Hi-Vis Yellow



Navy



Hi-Vis Orange



Matching Color
Plastic Snap
Closure

STYLE TR102 - TRUCKER REFLECTOR

Fabric:

- › 100% polyester (Navy twill is 100% cotton)

Key Features:

- › Five panel, structured, mid-profile
- › High-visibility color crown with matching color mesh side and back panels
- › High-visibility contrast color taping with reflective grey center stripe on bottom side panels
- › Pre-curved visor with low glare grey twill under visor and sweatband
- › Matching color plastic snap closure
- › Hi-Vis colors meet ANSI Class 2 standards
- › Navy color meets enhanced visibility standards
- › **Call for Pricing**

Sunblock Collection

Whether shooting the rapids, hiking the back country or catching a few rays at the beach, Adams Sunblock Collection has you covered. Smart styling seamlessly integrated with a unique technical fabric and impressive functional features makes this your go to headwear line. The cotton/nylon fabric blend provides breathability, light weight durability and dries quickly. Technical features include UV Protection (UPF 50+), our exclusive Cool-Crown™ mesh lining, water/stain repellent coating, extended visor lengths, terry sweatbands and protective neck caps.



Adams Sunblock collection has you covered with extended visors and protective neck caps.



Water and stain resistant.



Adams UV Protection by Rayosan blocks the majority of UV rays.

Cool-Crown™



Adams innovative Cool-Crown™ mesh lining is designed to promote cooling and minimize staining.



Outback Safari Style

STYLE OB101 - OUTBACK

Fabric:

- › 70% cotton/30% nylon
- › UV protective (UPF 50+) and water/stain-resistant coating

Key Features:

- › Safari crown with floatable wide brim
- › Mesh vented insert on crown for breathability
- › Green under visor reduces glare
- › Adjustable chin strap with pull-up fabric chin lock
- › Interior hook and loop closure pocket
- › Available in sizes L - 60 cm (7 1/2") and XL - 62 cm (7 3/4")
- › **Call for Pricing**



Khaki

Stone



The Cool-Crown™ mesh liner is designed to promote cooling and minimize staining.



Wide Floatable Brim, UV Protection



Navy/Stone



Stone/Navy



White/White



Inside View

STYLE XP101 - EXTREME ADVENTURER

Fabric:

- › 70% cotton/30% nylon
- › UV protective (UPF 50+) and water-repellent/stain-resistant coating

Key Features:

- › Guide style bucket silhouette
- › Chin strap with barrel lock adjuster
- › Wide 4" brim for maximum sun protection
- › Contrast color under visor, except white
- › 100% cotton terry sweatband for absorbency
- › Adams exclusive Cool-Crown® mesh lining and floatable brim
- › Available in sizes S/M - 57 cm (7 1/8") and L/XL - 60 cm (7 1/2")
- › **Call for Pricing**

Ultimate Sun Protection



Nautical Red



White



Stone



Navy



Khaki

Cool-Crown™



Rear View

Zipper Pocket

STYLE UBM101 - EXTREME VACATIONER

Fabric:

- › 70% cotton/30% nylon
- › UV protective (UPF 50+) and water/stain-repellant coating

Key Features:

- › Bucket style with neck cape, metal clip and cord system to attach to collar
- › Adams exclusive Cool-Crown™ mesh lining
- › Zipper pocket in the neck cape, terry cloth sweatband
- › Available in sizes L - 59 cm (7 3/8") and XL - 61 cm (7 5/8")
- › **Call for Pricing**



Perform Under Extreme Conditions



Navy/Black



Khaki/Black



Olive/Black



Stone/White



Nautical Red/Black



White/White



Rear View

Zipper Pocket

STYLE XCM101 - EXTREME CONDITION

Fabric:

- › 70% cotton/30% nylon
- › UV protective (UPF 50+) and water/stain-repellant coating

Key Features:

- › Four panel, low-profile
- › Mesh panels and large screen metal eyelets to promote air flow
- › 3 1/2" foam-covered visor ensures floatation
- › Neck cape includes hidden zipper pocket and protects neck and ears
- › Cord with metal clip to attach collar
- › Adams exclusive Cool-Crown™ mesh lining
- › Terry cloth sweatband
- › **Call for Pricing**

Cool-Crown™



The Cool-Crown™ mesh liner is designed to promote cooling and minimize staining.

Adams
sunblock
Collection 50+

UV
50+

SOIL
RELEASE

Side Mesh Vents, Extra Breathability



White/White



Navy/Black



Khaki/Black



Olive/Black



Stone/White



Side View w/Clip

STYLE EF101 - EXTREME PERFORMANCE

Fabric:

- › 70% cotton/30% nylon
- › UV protective (UPF 50+) and water/stain-repellant coating

Key Features:

- › Four panel, low-profile
- › 3 3/4" visor provides added sun protection
- › Green underneath visor to reduce glare
- › Mesh side panels and screen metal eyelets for extra breathability
- › Flexible nylon webbing outside hook and loop closure
- › Metal clip and cord system to attach to collar
- › Adams exclusive Cool-Crown™ comfort mesh lining
- › Terry cloth sweatband
- › **Call for Pricing**

Extended Visor with UV Protection



White



Navy



Khaki



Olive



Nautical Red



Stone



Rear View

STYLE SH101 - SUNSHIELD

Fabric:

- › 70% cotton/30% nylon
- › UV protective (UPF 50+) and water/stain-repellant coating

Key Features:

- › Six panel, low profile
- › 3 3/4" visor provides added sun protection
- › Green underneath visor to reduce glare
- › Self-fabric strap with hook and loop closure and comfortable elastic loop
- › Adams exclusive Cool-Crown™ mesh lining
- › Terry cloth sweatband
- › **Call for Pricing**



Adjustable Cord
for Custom Fit
Collar Clip

Cool-Crown™
Zipper Pocket

Adams
sunblock
Collection 50+

UV
50+

SOIL
RELEASE

Neck Cape, Cool Crown



Navy



Stone



Olive



Nautical Red



White



Khaki



Rear View

STYLE EOM101 - EXTREME OUTDOOR

Fabric:

- › 70% cotton/30% nylon
- › UV protective (UPF 50+) and water/stain-repellant coating

Key Features:

- › Six panel, low profile, neck cape with zipper pocket
- › Adams exclusive Cool-Crown™ mesh lining
- › Metal clip and cord system to attach to collar, cord barrel lock closure to adjust size
- › 3 3/4" visor provides added sun protection
- › Green under visor to reduce glare, terry cloth sweatband
- › **Call for Pricing**

ADAMS®

NEW YORK • PARIS • MILAN

STYLE	DESCRIPTION	PG	STYLE	DESCRIPTION	PG
AC101	Ace	17	OB101	Outback	41
AM101	NEW Americana	36	OL102	Ollie	12
CN101	NEW Contender	20	PA102	Patriot (Stars & Stripes)	37
DP102	First String	39	PE102	Performer	30
DV101	Drifter	16	PE105	Clubhouse	31
DX101	Deluxe	26	PF101	Pro-Flow	28
EB101	Essentials Brushed	21	PN101	Pinnacle	19
EF101	Extreme Performance Hat	45	PR102	Prodigy	33
EN102	Endeavor	11	PV102	Premier	25
EOM101	Extreme Outdoor	47	PV112	Epic	24
EP101	Essentials Pigment Dyed	07	RF102	Reflector	40
FA102	Fairway	38	RM102	Rambler	23
GC102	Game Changer	10	SB101	Sunbuster	09
HT102	Heritage	34	SH101	Sunshield	46
IM101	Image Maker	22	SL101	Ladies' Sea Breeze	15
KN102	Knockout	32	TH101	Triumph	29
KO101	Youth Optimum	03	TR102	Trucker Reflective	40
LO101	Ladies' Optimum	08	UBM101	Extreme Vacationer	43
LP101	Optimum Pigment Dyed	03	VA101	Vacationer	14
LP102	Optimum Khaki Crown	04	VB101	Vibe	35
LP103	Optimum Stone Crown	05	VE101	Velocity	27
LP104	Optimum II True Color	18	XCM101	Extreme Condition	44
LP106	Spinnaker	06	XP101	Extreme Adventurer	42
NT102	The National	37			

Recommended Embroidery Placement & Size



FRONT

4" Width x 2" Height



SIDE

2" Width x 1.25" Height



BACK

4" Width — Curved
3" Width — Straight

Embroidery area on visors and Sunblock Collection varies by style.

OUR MOST POPULAR HAT:

The Optimum

PIGMENT-DYED PERFECTION



44 Pigment-Dyed & 13 Vat-Dyed True Colors!

ADAMS®

NEW YORK • PARIS • MILAN



SCAN TO VISIT OUR
ADAMS HEADWEAR
eCATALOG



<http://ecatalog.adamsheadwear.com>