

Hanes®

# 2020

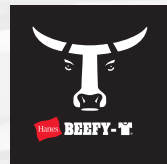
Branded Printwear Collection





# The first, and still the leaders

We've been doing this for a while now. In fact, we were the first brand to invest in the screenprinting industry. From innovations such as Beefy-T, a heavier weight, 100% ring spun cotton tee specific to printing to the latest tech, like Clean Canvas™, we've always stayed in tune with embellishers through time and have listened to trend reports and innovations in the channel to see where we go next. Our future depends on a partnership that can advance "the art of apparel."



12

13

14

15

1901 — 1970's — 1975 — 1979 — 1980's — 1996 — 1997 — 1999 — 2014 — 2017 — 2018

**P.H. Hanes Knitting Company** founded as a manufacturer of men's underwear.

In the mid '70s, executives at Hanes Knitting discovered that their white underwear products were being screenprinted and worn as outerwear.

Keith Aim of Hanes Knitwear believed there was a viable business in selling t-shirts to screenprinters. He developed the Hanes 5000 line of t-shirts and **the Printwear business was born.**

Hanes introduces a roomier, heavy-weight t-shirt offered in eight colors called the **Beefy-T**, specifically for the screenprint industry. Later that same year, Hanes develops the **"screenprinter fold"** eliminating the additional cost and handling of individual packaging.

Hanes introduces **50/50 blend** styles, the 5170 and 5370.

Hanes Printables adds **sportshirts** and **fleece** to the existing line of long and short sleeve t-shirts.

As a major sponsor of the Atlanta Olympics, Hanes produces a one-of-a-kind series of **Hanes Beefy-T** t-shirts. T-shirt #1 was auctioned for \$32,500, which went towards purchasing Olympic Game tickets for underprivileged children.



**printpro**  
HANES FLEECE

Hanes PrintPro® Fleece wins the prestigious Silver Edition **Best New Product** Award for its revolutionary, patented high stitch density fabric.

Hanes introduces the **Soft L'ink™ t-shirt** with a patented fabrication of polyester and ring spun cotton developed specifically for dye sublimation transfer printing.

**X-TEMP®** is launched — performance technology that reacts to body temperature as activity levels change for all-day comfort at work or play.

Hanes introduces **Clean Canvas™** specifically engineered for direct to garment printing (DTG). Clean Canvas™ removes waxes and oils from the fabric, which reduces variation and inconsistency in print quality.

Introduced **Hanes Black Label** — 20+ fashion forward styles. The modern day marriage of comfort, fashion and style — designed and constructed to deliver the perfect embellishment.



**2020**

Hanes will continue to be the **authentic** printwear leader.

**Hanes**  
**AUTHENTIC-T**  
MAKE IT YOURS



2020 | PRODUCT OVERVIEW

tees



5180  
Beefy-T\* T-Shirt



5190  
Beefy-T\* T-Shirt with Pocket



5186  
Beefy-T\* Long Sleeve T-Shirt



5380  
Youth Beefy-T\* T-Shirt



518T  
Beefy-T\* Tall T-Shirt



4980  
nano-T\* T-Shirt



498Y  
Youth nano-T\* T-Shirt



498P  
nano-T\* T-Shirt with Pocket



SLO4  
Women's nano-T\* T-Shirt



498V  
nano-T\* V-Neck T-Shirt



S04V  
Women's nano-T\* V-Neck T-Shirt



S04LS  
Women's nano-T\* Long Sleeve Scoop



498L  
nano-T\* Long Sleeve T-Shirt



JMS20  
Women's JMS\* Crew T-Shirt



JMS30  
Women's JMS\* V-Neck T-Shirt



JMS40  
Women's JMS\* Long Sleeve Scoop T-Shirt



42BA  
Men's X-TEMP\* 3/4 Sleeve Baseball T-Shirt



42LO  
X-TEMP\* Long Sleeve T-Shirt



42MT  
Men's X-TEMP\* Tank



42WT  
Women's X-TEMP\* Tank



42VO  
Women's X-TEMP\* V-Neck T-Shirt



4200  
Men's X-TEMP\* T-Shirt



420Y  
Youth X-TEMP\* T-Shirt



42TB  
Men's Triblend T-Shirt



42VT  
Women's Triblend V-Neck T-Shirt



MO100  
Men's Modal Triblend Crew



MO150  
Women's Modal Triblend Scoop



5170  
EcoSmart\* T-Shirt



5370  
Youth EcoSmart\* T-Shirt



W110  
Workwear Short Sleeve Pocket Tee



W120  
Workwear Long Sleeve Pocket Tee



5250 (6 oz.)  
Tagless\* T-Shirt



5590 (6 oz.)  
Tagless\* T-Shirt with Pocket



5680 (5 oz.)  
Women's Tagless\* T-Shirt



5780 (5 oz.)  
Women's Tagless\* V-Neck T-Shirt



5586 (6 oz.)  
Tagless\* Long Sleeve T-Shirt



5596 (6 oz.)  
Tagless\* Long Sleeve T-Shirt with Pocket



5450 (6 oz.)  
Youth Tagless\* T-Shirt



T120 (5 oz.)  
Toddler Tagless\* T-Shirt



5546 (6 oz.)  
Youth Tagless\* Long Sleeve T-Shirt



5280  
ComfortSoft\* T-Shirt



5286  
ComfortSoft\* Long Sleeve T-Shirt



5480  
Youth ComfortSoft\* T-Shirt



5660  
Wear Around\* T-Shirt



4820  
Cool DRI\* Performance T-Shirt



4830  
Women's Cool DRI\* Performance T-Shirt



482Y  
Youth Cool DRI\* Performance T-Shirt



483V  
Women's Cool DRI\* Performance V-Neck T-Shirt



482L  
Cool DRI\* Long Sleeve Performance T-Shirt

polos



42X0  
Men's X-TEMP\* Polo Shirt



055P  
Men's X-TEMP\* Pique Polo Shirt



43X0  
Women's X-TEMP\* Polo Shirt



035P  
Women's X-TEMP\* Pique Polo Shirt




0504  
EcoSmart\* Jersey Polo Shirt with Pocket




054X  
EcoSmart\* Jersey Polo Shirt



054Y  
Youth EcoSmart\* Jersey Polo Shirt




4800  
Men's Cool DRI\* Polo Shirt




480W  
Women's Cool DRI\* Polo Shirt


fleece




P160  
EcoSmart\* Fleece Sweatshirt




P360  
Youth EcoSmart\* Fleece Sweatshirt




P170  
EcoSmart\* Fleece Pullover Hood




P180  
EcoSmart\* Full-Zip Fleece Hood



P473  
Youth EcoSmart\* Fleece Pullover Hood



P480  
Youth EcoSmart\* Full-Zip Fleece Hood



F280  
Ultimate Cotton\* Full-Zip Fleece Hood



F170  
Ultimate Cotton\* Fleece Pullover Hood



F260  
Ultimate Cotton\* Fleece Sweatshirt



P650  
EcoSmart\* Fleece Sweatpant



P450  
Youth EcoSmart\* Fleece Sweatpant





# The optimal print platform for direct to garment

Hanes' proprietary Clean Canvas™ process provides an optimal print platform for screen and direct to garment printing. By removing waxes and oils from the fabric, Clean Canvas™ reduces variation and inconsistency in print quality. It's time to make Hanes your go-to tee for DTG.

**CLEAN CANVAS™**







# We started this business with yours in mind

1975 was a good year — the legendary Beefy-T was born. Our 6.1 ounce, 100% ring spun cotton tee was conceived from creative minds to provide engineered apparel specifically for the imprint market. With 45 years of thick, rich comfort and durable construction, the Beefy-T continues to be a top-shelf choice for your customers.





## A red book cover with a white bull's head illustration. The bull's head is stylized, with large eyes and a prominent nose. The book is part of a collection, as evidenced by the visible edges of other books in the background.

A close-up photograph of a wooden pallet, showing the horizontal slats and the vertical stringer. The wood is light-colored and appears to be made of pine or a similar softwood. The pallet is part of a larger stack, with other pallets visible in the background.



**5180**  
**Beefy-T® T-Shirt**  
S-6XL  
S-XL: 6 dz/case  
2XL-6XL: 3 dz/case



**5190**  
**Beefy-T® T-Shirt with Pocket**  
S-XL: 6 dz/case  
2XL-3XL: 3 dz/case



**5380**  
**Youth Beefy-T® T-Shirt**  
XS-XL  
XS-XL: 6 dz/case



**5186**  
**Beefy-T® Long Sleeve T-Shirt**  
S-3XL  
S-3XL: 3 dz/case



**Also available:**  
**518T**  
**Beefy-T® Tall T-Shirt**  
 extra 3" in body length  
 and 1" in sleeve length  
 LT-4XLT  
 LT-4XLT: 2 dz/case

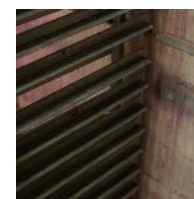
Hanes®

100% RING SPUN

| 100% RING SPUN |   |   |   |   |   |                     |
|----------------|---|---|---|---|---|---------------------|
| 6X             | • | • | • | • | • | white WH            |
| 4X             | • | • | • | • | • | ash AS              |
| 5X             | • | • | • | • | • | light steel LW      |
| •              | • | • | • | • | • | smoke gray 8Q       |
| •              | • | • | • | • | • | oxford gray XY      |
| •              | • | • | • | • | • | charcoal heather HL |
| 6X             | • | • | • | • | • | black BK            |
| •              | • | • | • | • | • | natural NT          |
| •              | • | • | • | • | • | sand BM             |
| •              | • | • | • | • | • | yellow YE           |
| •              | • | • | • | • | • | daffodil yellow DY  |
| •              | • | • | • | • | • | gold GO             |
| •              | • | • | • | • | • | candy orange CJ     |
| •              | • | • | • | • | • | orange ON           |
| •              | • | • | • | • | • | clean mint CM       |
| •              | • | • | • | • | • | lime LI             |
| •              | • | • | • | • | • | kelly green KG      |
| •              | • | • | • | • | • | fatigue green FT    |
| •              | • | • | • | • | • | deep forest FO      |
| •              | • | • | • | • | • | light blue LB       |
| •              | • | • | • | • | • | blue horizon AF     |
| •              | • | • | • | • | • | heather blue HU     |
| •              | • | • | • | • | • | heather navy HN     |
| •              | • | • | • | • | • | carolina blue YO    |
| •              | • | • | • | • | • | denim blue DM       |
| •              | • | • | • | • | • | blue bell breeze ED |
| •              | • | • | • | • | • | teal TE             |
| •              | • | • | • | • | • | deep royal RO       |
| 4X             | • | • | • | • | • | navy NY             |
| •              | • | • | • | • | • | purple PR           |
| •              | • | • | • | • | • | lavender LV         |
| •              | • | • | • | • | • | pale pink PI        |
| •              | • | • | • | • | • | charisma coral CC   |
| •              | • | • | • | • | • | wow pink 6A         |
| •              | • | • | • | • | • | athletic red 5A     |
| •              | • | • | • | • | • | heather red HE      |
| •              | • | • | • | • | • | deep red RE         |
| •              | • | • | • | • | • | cardinal CD         |
| •              | • | • | • | • | • | maroon MR           |

\*ash: 99% cotton/1% polyester  
light steel: 90% cotton/10% polyester  
charcoal heather: 60% cotton/40% polyester  
oxford gray: 60% cotton/40% polyester





Hanes®

# How it all began

Originally designed to help screen printers capitalize on retail trends and meet the demands of millennials, our Nano collection began with 4.5 ounce lightweight, 100% ring spun tees. With its contemporary fit and comfortable feel, this easy-to-print canvas took off in popularity and now includes a variety of styles for everyone.





# NANO-T®

Premium fashion and modern, lightweight fit without taking your budget to the next level.



- 4.5 oz. 30/1's 100% ring spun cotton\*
- modern fit and narrower ribbed collar without cover seaming for a vintage look - only 4980, 498V, 498L
- Hanes' proprietary Clean Canvas™ process provides an optimal print platform for screen and direct to garment printing. By removing waxes and oils from the fabric, Clean Canvas™ reduces variation and inconsistency in print quality.
- double-needle sleeve and bottom hems
- shoulder-to-shoulder tape
- preshrunk for a great fit wash after wash
- tear away label
- imported



**4980**  
nano-T\* T-Shirt  
S-3XL  
S-XL: 6 dz/case  
2XL-3XL: 3 dz/case



**498V**  
nano-T\* V-Neck T-Shirt  
S-3XL  
S-3XL: 3 dz/case



**498P**  
nano-T\* T-Shirt with Pocket  
S-3XL  
S-3XL: 3 dz/case



**498L**  
nano-T\* Long Sleeve T-Shirt  
S-3XL  
S-3XL: 3 dz/case



| 100% RING SPUN |   |   |   |                     |
|----------------|---|---|---|---------------------|
| 498L           | • | • | • | white WH            |
| 498V           | • | • | • | ash AS              |
| 498P           | • | • | • | light steel LW      |
| 498Y           | • | • | • | smoke gray 8Q       |
| 4980           | • | • | • | charcoal heather HL |
|                | • | • | • | black BK            |
|                | • | • | • | yellow YE           |
|                | • | • | • | gold GO             |
|                | • | • | • | orange ON           |
|                | • | • | • | lime LI             |
|                | • | • | • | kelly green KG      |
|                | • | • | • | fatigue green FT    |
|                | • | • | • | deep forest FO      |
|                | • | • | • | light blue LB       |
|                | • | • | • | carolina blue YO    |
|                | • | • | • | denim blue DM       |
|                | • | • | • | heather blue HU     |
|                | • | • | • | blue bell breeze ED |
|                | • | • | • | deep royal RO       |
|                | • | • | • | heather navy HN     |
|                | • | • | • | navy NY             |
|                | • | • | • | purple PR           |
|                | • | • | • | pale pink PI        |
|                | • | • | • | heather red HE      |
|                | • | • | • | deep red RE         |
|                | • | • | • | maroon MR           |
|                | • | • | • | athletic red 5A     |

\*ash: 99% cotton/1% polyester  
light steel: 90% cotton/10% polyester



# WOMEN'S NANO-T® + JMS®

Perfectly sized silhouettes create the right fit for every woman. Premium fashion and modern, lightweight fit without taking your budget to the next level.



- 4.5 oz. 30/1's 100% ring spun cotton\*
- classic women's fit
- modern curvy sizing 1X-5X
- Hanes' proprietary Clean Canvas™ process provides an optimal print platform for screen and direct to garment printing. By removing waxes and oils from the fabric, Clean Canvas™ reduces variation and inconsistency in print quality.
- double-needle sleeve and bottom hems
- soft fabric-taped neck seam resists rip-out and stretch-out
- tear away label
- imported



**SL04**  
Women's nano-T\* T-Shirt  
S-3XL  
S-3XL: 6 dz/case



**JMS20**  
Women's JMS\* Crew T-Shirt  
1X-5X  
1X-5X: 2 dz/case

← Companion style with extended sizes →



**S04V**  
Women's nano-T\* V-Neck T-Shirt  
XS-3XL  
XS-XL: 6 dz/case  
2XL-3XL: 3 dz/case



**JMS30**  
Women's JMS\* V-Neck T-Shirt  
1X-5X  
1X-5X: 2 dz/case

← Companion style with extended sizes →



**S04LS**  
Women's nano-T\* Long Sleeve Scoop  
S-3XL  
S-3XL: 3 dz/case



**JMS40**  
Women's JMS\* Long Sleeve Scoop T-Shirt  
1X-5X  
1X-5X: 2 dz/case

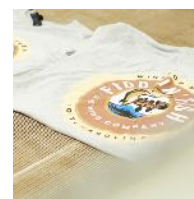
← Companion style with extended sizes →

Hanes®

|    | SL04 | S04V | S04LS | JMS20 | JMS30 | JMS40 |                     |
|----|------|------|-------|-------|-------|-------|---------------------|
| 3X | •    | •    | •     | •     | •     | •     | white WH            |
| •  | •    | •    | •     | •     | •     | •     | ash AS              |
| 3X | •    | •    | •     | •     | •     | •     | light steel LW      |
| 3X | •    | •    | •     | •     | •     | •     | smoke gray 8Q       |
| 3X | •    | •    | •     | •     | •     | •     | charcoal heather HL |
| 3X | •    | •    | •     | •     | •     | •     | black BK            |
| •  | •    | •    | •     | •     | •     | •     | kelly green KG      |
| 3X | •    | •    | •     | •     | •     | •     | fatigue green FT    |
| •  | •    | •    | •     | •     | •     | •     | deep forest FO      |
| •  | •    | •    | •     | •     | •     | •     | light blue LB       |
| 3X | •    | •    | •     | •     | •     | •     | blue horizon AF     |
| 3X | •    | •    | •     | •     | •     | •     | heather blue HU     |
| •  | •    | •    | •     | •     | •     | •     | carolina blue YO    |
| •  | •    | •    | •     | •     | •     | •     | blue bell breeze ED |
| •  | •    | •    | •     | •     | •     | •     | teal TE             |
| 3X | •    | •    | •     | •     | •     | •     | deep royal RO       |
| 3X | •    | •    | •     | •     | •     | •     | heather navy HN     |
| 3X | •    | •    | •     | •     | •     | •     | navy NY             |
| 3X | •    | •    | •     | •     | •     | •     | purple PR           |
| •  | •    | •    | •     | •     | •     | •     | lavender LV         |
| 3X | •    | •    | •     | •     | •     | •     | pale pink PI        |
| •  | •    | •    | •     | •     | •     | •     | pink PS             |
| 3X | •    | •    | •     | •     | •     | •     | wow pink 6A         |
| 3X | •    | •    | •     | •     | •     | •     | deep red RE         |
| •  | •    | •    | •     | •     | •     | •     | maroon MR           |
| 3X | •    | •    | •     | •     | •     | •     | heather red HE      |
| •  | •    | •    | •     | •     | •     | •     | athletic red 5A     |

\*ash: 99% cotton/1% polyester  
light steel: 90% cotton/10% polyester

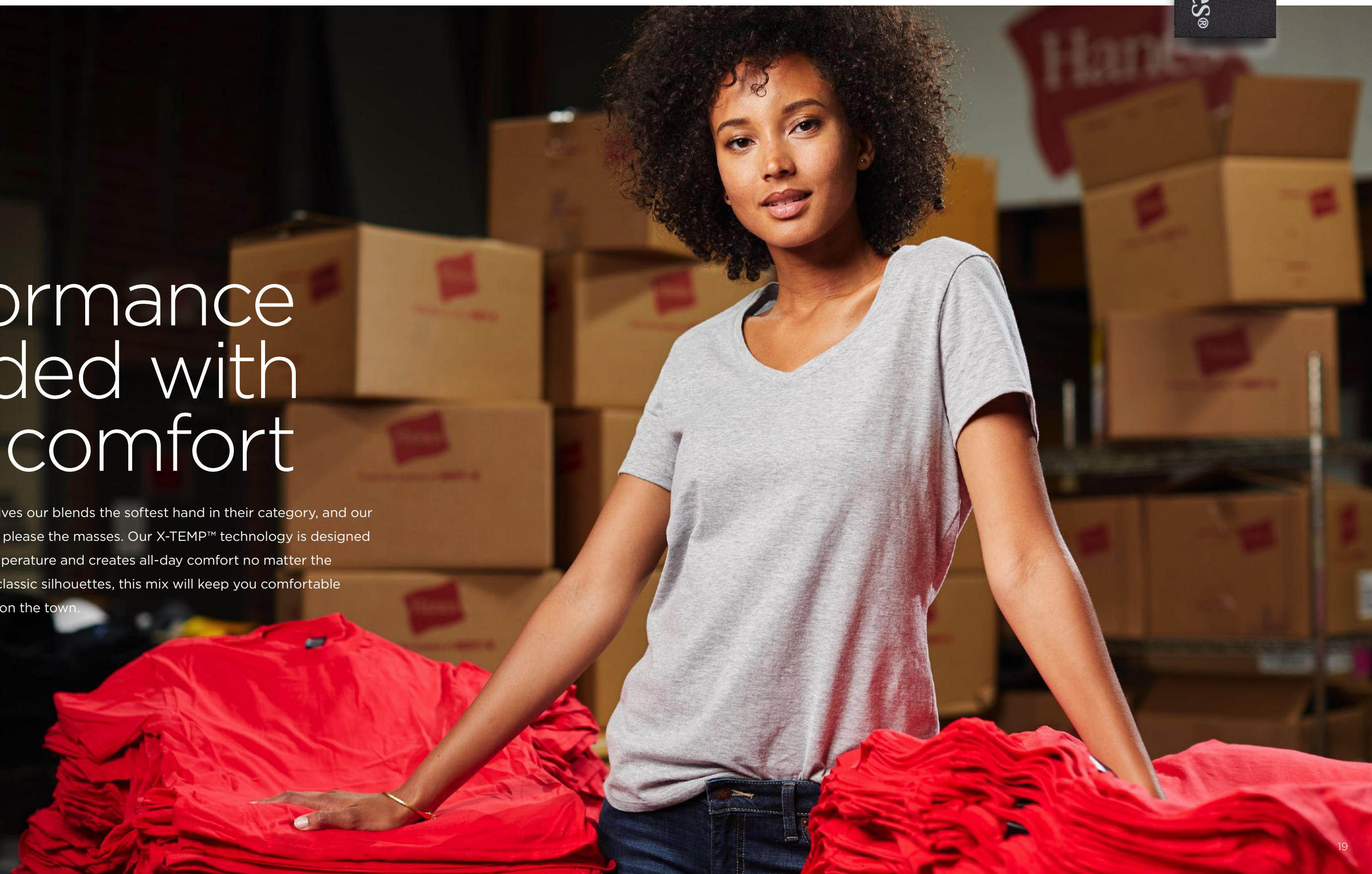




Hanes®

# Performance blended with silky comfort

Ring spun wicking fabric gives our blends the softest hand in their category, and our on-trend colors are sure to please the masses. Our X-TEMP™ technology is designed to adjust to the body's temperature and creates all-day comfort no matter the activity. Combined with 6 classic silhouettes, this mix will keep you comfortable at work, at the gym or out on the town.







# X-TEMP®

Vibrant colors for today's athleisure lifestyle, with the same comfort on the go and in the gym.



Ring Spun Tear Away Label Moisture Wick

- 4.5 oz. 60% ring spun cotton/40% polyester\* gives these tees and tanks the softest hand in blended fashion tees
- 40+ UPF rating, excellent UV protection
- moisture wicking fabric with dynamic vapor control designed to adjust to body temperature for all-day comfort
- double-needle, cover-seamed neck with 3/4" lay flat collar
- shoulder-to-shoulder tape for durability
- tear away label
- imported



**42BA**  
Men's X-TEMP® 3/4 Sleeve Baseball T-Shirt  
S-3XL  
S-3XL: 3 dz/case



**42LO**  
X-TEMP® Long Sleeve T-Shirt  
S-3XL  
S-3XL: 3 dz/case



**42MT**  
Men's X-TEMP® Tank  
S-3XL  
S-XL: 3 dz/case  
2XL-3XL: 2 dz/case



**42WT**  
Women's X-TEMP® Tank  
S-3XL  
S-XL: 3 dz/case  
2XL-3XL: 2 dz/case



**42VO**  
Women's X-TEMP® V-Neck T-Shirt  
S-3XL  
S-XL: 6 dz/case  
2XL-3XL: 3 dz/case



**4200**  
Men's X-TEMP® T-Shirt  
S-3XL  
S-XL: 6 dz/case  
2XL-3XL: 3 dz/case

**420Y**  
Youth X-TEMP® T-Shirt  
XS-XL  
XS-XL: 6 dz/case

Hanes®

## RING SPUN BLENDS

|                            | 42BA | 42MT | 42VO | 42LO | 42WT | 4200 | 420Y |
|----------------------------|------|------|------|------|------|------|------|
| white WH                   | •    | •    | •    | •    | •    | •    | •    |
| ash AS                     | •    | •    | •    | •    | •    | •    | •    |
| light steel LW             | •    | •    | •    | •    | •    | •    | •    |
| smoke gray 8Q              | •    | •    | •    | •    | •    | •    | •    |
| charcoal heather HL        | •    | •    | •    | •    | •    | •    | •    |
| black BK                   | •    | •    | •    | •    | •    | •    | •    |
| clean mint CM              | •    | •    | •    | •    | •    | •    | •    |
| blue horizon AF            | •    | •    | •    | •    | •    | •    | •    |
| deep royal RO              | •    | •    | •    | •    | •    | •    | •    |
| navy NY                    | •    | •    | •    | •    | •    | •    | •    |
| deep red RE                | •    | •    | •    | •    | •    | •    | •    |
| charisma coral CC          | •    | •    | •    | •    | •    | •    | •    |
| charcoal heather HL        | •    | •    | •    | •    | •    | •    | •    |
| neon orange heather NN     | •    | •    | •    | •    | •    | •    | •    |
| neon lemon heather NZ      | •    | •    | •    | •    | •    | •    | •    |
| neon lime heather N7       | •    | •    | •    | •    | •    | •    | •    |
| neon blue heather NX       | •    | •    | •    | •    | •    | •    | •    |
| neon pink heather NK       | •    | •    | •    | •    | •    | •    | •    |
| white/black                | •    | •    | •    | •    | •    | •    | 74   |
| white/deep red             | •    | •    | •    | •    | •    | •    | 76   |
| white/deep royal           | •    | •    | •    | •    | •    | •    | 57   |
| white/navy                 | •    | •    | •    | •    | •    | •    | 81   |
| lt. steel/navy             | •    | •    | •    | •    | •    | •    | LY   |
| lt. steel/charcoal heath.  | •    | •    | •    | •    | •    | •    | L4   |
| lt. steel/neon blue heath. | •    | •    | •    | •    | •    | •    | L8   |
| lt. steel/neon pink heath. | •    | •    | •    | •    | •    | •    | LP   |

\*light steel: 90% cotton/10% polyester





# Lightweight comfort, fashion- forward style

With our classic or retail-inspired triblends, you'll experience the ultimate comfort in on-trend colors. Our Triblends and Modal Triblends provide you the perfect shirt for that coffee shop client or the band that needs that perfect fit and feel.







# TRIBLEND

Three fibers make this the premium choice for those who demand the finest quality.



Tear Away Label



Moisture Wick

- 4.5 oz. 30% cotton/60% polyester/10% rayon fabric creates the ultimate comfort tee and gives our triblend an on-trend, fashion-forward heather color palette
- 40+ UPF rating, excellent UV protection
- moisture wicking fabric with dynamic vapor and odor control designed to adjust to body temperature for all-day comfort
- FreshIQ® fabric treatment to reduce unpleasant odors from your clothing
- double-needle, cover-seamed neck with lay flat collar
- shoulder-to-shoulder tape for durability
- tear away label
- imported



**42TB**  
**Men's Triblend T-Shirt**  
S-3XL  
S-XL: 6 dz/case  
2XL-3XL: 3 dz/case



**42VT**  
**Women's Triblend V-Neck T-Shirt**  
S-3XL  
S-XL: 6 dz/case  
2XL-3XL: 3 dz/case

Hanes®

42VT  
42TB  
NEW  
NEW

## RING SPUN BLENDS

- solid white triblend Z2
- slate triblend Z4
- solid black triblend Z1
- breezy green triblend Z8
- military green triblend Z5
- turquoise triblend Z9
- solid navy triblend Y8Y
- royal triblend Z6
- navy triblend Z3
- grape triblend Z4
- jazzberry pink triblend ZB
- solid red triblend Y8W
- red triblend Z7





# MODAL TRIBLEND

The ultimate choice for retail softness and an eco-conscious environmental impact.



- 4.7 oz. 40% modal/ 35% combed ring spun cotton/25% polyester
- side-seamed and shaped contemporary fit
- single-needle blind stitch hems and premium enforced bound collar
- tear away label
- imported



**MO100**  
Men's Modal Triblend Crew  
XS-3XL  
XS-3XL: 2 dz/case



**MO150**  
Women's Modal Triblend Scoop  
XS-3XL  
XS-3XL: 2 dz/case

Hanes®

Our Lenzing Modal® triblend fabric utilizes sustainably sourced Modal from the industry leader in fiber innovation, Lenzing. This ultra-soft material is CO<sub>2</sub> neutral and requires less energy to produce than other leading fibers in the apparel industry. For the ultimate in retail softness and an eco-conscious environmental impact, the Lenzing Modal® men's and women's triblend tees offer uncompromising quality at an incredible value.

Lenzing Modal® is a trademark of Lenzing AG.

| RING SPUN BLENDS |                            |
|------------------|----------------------------|
| MO150            | solid white triblend Z2    |
| •                | black heather triblend ZC  |
| •                | solid black triblend Z1    |
| •                | breezy green triblend Z8   |
| •                | kelly green triblend ZG    |
| •                | military green triblend Z5 |
| •                | turquoise triblend Z9      |
| •                | solid navy triblend Y8Y    |
| •                | royal triblend Z6          |
| •                | navy triblend Z3           |
| •                | grape triblend Z4          |
| •                | solid red triblend Y8W     |
| •                | carmine red triblend ZH    |
| •                | jazzberry pink triblend ZB |





eco<sup>smart</sup>



# Better for the planet, better for the bottom line

Being environmentally responsible means not only changing the way we make products, but also the nature of the products we make. The EcoSmart® line features super-soft fleece, polos and t-shirts made in part from recycled plastic bottles or recycled cotton. In fact, Hanesbrands products keep the equivalent of more than 60 million plastic bottles from landfills each year.



Hanesbrands products keep the equivalent of more than 60 million plastic bottles from landfills each year. Learn more at [Hanes.com/EarthFriendly](https://www.hanes.com/EarthFriendly)





## 31





- 5.3 oz. 65% polyester/  
35% cotton
- tag-free neck label
- reinforced armhole  
stitching for durability
- lay flat collar for shape  
retention and durability
- durable left chest pocket  
with oversized pencil stitch
- longer sleeves and longer length
- shoulder-to-shoulder taping  
for comfort
- safety green is ANSI/ISEA  
107-2010 certified as  
background material for  
high visibility safety apparel
- imported

Tag-free  
for comfort

## Shoulder-to-shoulder taping for comfort

**Reinforced armhole stitching for durability**

## Oversized pencil stitch pocket

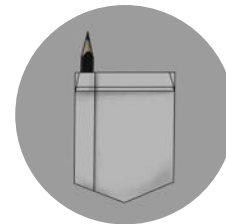
Longer sleeves +1"

Longer length +1"

# Workwear

Designed with hard work in mind, Hanes® Workwear tees have everything you need to get the job done as comfortably as possible. This soft fabric offers superior wicking performance compared to Hanes® basic tees. Don't sacrifice comfort to get the job done.

## WORKWEAR TEES



W110 & W120 come  
with oversized pencil  
stitch pocket

**W110**  
**Workwear Short Sleeve Pocket Tee**  
S-4XL  
S-XL: 6 dz/case  
2XL-4XL: 3 dz/case



**W120**  
**Workwear Long Sleeve Pocket Tee**  
S-4XL  
S-XL: 6 dz/case  
2XL-4XL: 3 dz/case



Moisture  
Wick



**FreshIQ**  
Advanced Odor  
Protection Technology

FreshIQ® fabric treatment is an advanced odor protection technology that targets odor-causing agents thereby reducing unpleasant odors from your clothing.

| Companion Style  | W110 | W120 | P160 | P170 | 4820 | 482L |
|------------------|------|------|------|------|------|------|
| light steel LW   | •    | •    | •    | •    | •    | •    |
| graphite BQ      |      |      |      |      |      |      |
| black BK         |      |      |      |      |      |      |
| navy NY          |      |      |      |      |      |      |
| army brown LN    |      |      |      |      |      |      |
| safety green 82  |      |      |      |      |      |      |
| safety orange SH |      |      |      |      |      |      |

## COMPANION STYLES



**P160**  
**EcoSmart® Fleece**  
**Sweatshirt**  
S-5XL  
S-3XL: 3 dz/case  
4XL-5XL: 2 dz/case



P170  
EcoSmart® Fleece  
Pullover Hood  
S-5XL  
S-5XL: 2 dz/case



**4820**  
**Cool DRI®**  
**Performance T-Shirt**  
XS-3XL  
XS-XL: 3 dz/case  
2XL-3XL: 2 dz/case



**482L**  
**Cool DRI® Long Sleeve**  
**Performance T-Shirt**  
XS-3XL  
XS-3XL: 3 dz/case





# TAGLESS®

Versatility for any  
printwear project;  
this 6 ounce open-end  
platform contains our  
largest color palette  
and size range.



**5250 (6 oz.)**  
**Tagless® T-Shirt**  
S-6XL  
S-XL: 6 dz/case  
2XL-4XL: 3 dz/case  
5XL-6XL: 1 dz/case



**5590 (6 oz.)**  
**Tagless® T-Shirt with Pocket**  
S-3XL  
S-XL: 6 dz/case  
2XL-3XL: 3 dz/case



**5586 (6 oz.)**  
**Tagless® Long Sleeve T-Shirt**  
S-3XL  
S-3XL: 3 dz/case



**5596 (6 oz.)**  
**Tagless® Long Sleeve T-Shirt with Pocket**  
S-3XL  
S-3XL: 3 dz/case



**5680 (5 oz.)**  
**Women's Tagless® T-Shirt**  
S-3XL  
S-XL: 6 dz/case  
2XL-3XL: 3 dz/case



**5780 (5 oz.)**  
**Women's Tagless® V-Neck T-Shirt**  
S-3XL  
S-XL: 6 dz/case  
2XL-3XL: 3 dz/case



**5450 (6 oz.)**  
**Youth Tagless® T-Shirt**  
XS-XL  
XS-XL: 6 dz/case

Toddler  
Sizes  
Available



**5546 (6 oz.)**  
**Youth Tagless® Long Sleeve T-Shirt**  
XS-XL  
XS-XL: 6 dz/case

- 5.0 oz. and 6.0 oz.  
100% ComfortSoft® cotton\*
- tag-free neck label
- double-needle, cover-seamed neck with lay flat collar
- double-needle short sleeve and bottom hems
- long sleeve comfortable rib-knit cuffs
- shoulder-to-shoulder tape for durability
- imported

| 5250 | 5590 | 5586 | 5596 | 5680 | 5780 | 5450 | 5546 | T120 |                      |
|------|------|------|------|------|------|------|------|------|----------------------|
| 6X   | •    | •    | •    | •    | •    | •    | •    | •    | white WH             |
| 6X   | •    | •    | •    | •    | •    | •    | •    | •    | ash AS               |
| 6X   | •    | •    | •    | •    | •    | •    | •    | •    | light steel LW       |
| •    | •    | •    | •    | •    | •    | •    | •    | •    | vintage gray VH      |
| 5X   | •    | •    | •    | •    | •    | •    | •    | •    | oxford gray XY       |
| 6X   | •    | •    | •    | •    | •    | •    | •    | •    | smoke gray 8Q        |
| 5X   | •    | •    | •    | •    | •    | •    | •    | •    | charcoal heather HL  |
| 6X   | •    | •    | •    | •    | •    | •    | •    | •    | black BK             |
| •    | •    | •    | •    | •    | •    | •    | •    | •    | natural NT           |
| 6X   | •    | •    | •    | •    | •    | •    | •    | •    | sand BM              |
| •    | •    | •    | •    | •    | •    | •    | •    | •    | pebble UG            |
| 5X   | •    | •    | •    | •    | •    | •    | •    | •    | dark chocolate DE    |
| •    | •    | •    | •    | •    | •    | •    | •    | •    | daffodil yellow DY   |
| 6X   | •    | •    | •    | •    | •    | •    | •    | •    | yellow YE            |
| •    | •    | •    | •    | •    | •    | •    | •    | •    | candy orange CJ      |
| 6X   | •    | •    | •    | •    | •    | •    | •    | •    | gold GO              |
| 6X   | •    | •    | •    | •    | •    | •    | •    | •    | safety orange SH     |
| 5X   | •    | •    | •    | •    | •    | •    | •    | •    | athletic orange AX   |
| 6X   | •    | •    | •    | •    | •    | •    | •    | •    | orange ON            |
| 6X   | •    | •    | •    | •    | •    | •    | •    | •    | safety green 82      |
| •    | •    | •    | •    | •    | •    | •    | •    | •    | clean mint CM        |
| 6X   | •    | •    | •    | •    | •    | •    | •    | •    | lime LI              |
| •    | •    | •    | •    | •    | •    | •    | •    | •    | shamrock green 7A    |
| •    | •    | •    | •    | •    | •    | •    | •    | •    | kelly green KG       |
| •    | •    | •    | •    | •    | •    | •    | •    | •    | stonewashed green WE |
| •    | •    | •    | •    | •    | •    | •    | •    | •    | fatigue green FT     |
| 6X   | •    | •    | •    | •    | •    | •    | •    | •    | deep forest FO       |
| •    | •    | •    | •    | •    | •    | •    | •    | •    | blue horizon AF      |
| 6X   | •    | •    | •    | •    | •    | •    | •    | •    | light blue LB        |
| •    | •    | •    | •    | •    | •    | •    | •    | •    | aquatic blue AB      |
| 5X   | •    | •    | •    | •    | •    | •    | •    | •    | carolina blue YO     |
| •    | •    | •    | •    | •    | •    | •    | •    | •    | stonewashed blue WU  |
| 6X   | •    | •    | •    | •    | •    | •    | •    | •    | denim blue DM        |
| 6X   | •    | •    | •    | •    | •    | •    | •    | •    | sapphire O8          |
| •    | •    | •    | •    | •    | •    | •    | •    | •    | blue bell breeze ED  |
| •    | •    | •    | •    | •    | •    | •    | •    | •    | palace blue PF       |
| 5X   | •    | •    | •    | •    | •    | •    | •    | •    | teal TE              |
| 6X   | •    | •    | •    | •    | •    | •    | •    | •    | deep royal RO        |
| 6X   | •    | •    | •    | •    | •    | •    | •    | •    | navy NY              |
| •    | •    | •    | •    | •    | •    | •    | •    | •    | lavender LV          |
| 6X   | •    | •    | •    | •    | •    | •    | •    | •    | purple PR            |
| •    | •    | •    | •    | •    | •    | •    | •    | •    | athletic red 5A      |
| 6X   | •    | •    | •    | •    | •    | •    | •    | •    | deep red RE          |
| •    | •    | •    | •    | •    | •    | •    | •    | •    | cardinal CD          |
| 6X   | •    | •    | •    | •    | •    | •    | •    | •    | maroon MR            |
| 6X   | •    | •    | •    | •    | •    | •    | •    | •    | pale pink PI         |
| •    | •    | •    | •    | •    | •    | •    | •    | •    | pink PS              |
| •    | •    | •    | •    | •    | •    | •    | •    | •    | charisma coral CC    |
| 5X   | •    | •    | •    | •    | •    | •    | •    | •    | wow pink 6A          |

\*ash: 99% cotton/1% polyester  
light steel: 90% cotton/10% polyester  
charcoal heather: 60% cotton/40% polyester  
oxford gray: 60% cotton/40% polyester  
safety green: 60% cotton/40% polyester  
safety orange: 60% cotton/40% polyester

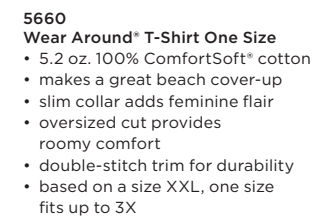
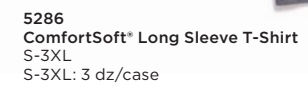
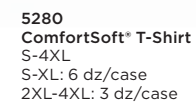




When meeting the budget is the most important factor, this tee offers your customers quality and softness at an affordable price.



- 5.2 oz. 100% ComfortSoft® cotton\*
- double-needle, cover-seamed neck with lay flat collar that keeps its shape
- double-needle sleeve and bottom hems
- shoulder-to-shoulder tape for durability
- tear away label
- imported



\*ash: 99% cotton/1% polyester  
light steel: 90% cotton/10% polyester  
charcoal heather: 50% cotton/50% polyester





# ULTIMATE COTTON®

An easy-to-print canvas that keeps you wrapped in warmth and softness year-round.



- extra-heavyweight 9.7 oz. 90% cotton/10% polyester\* for ultimate comfort
- patented low-pill, high-stitch-density PrintPro® XP fabric for easy embellishing
- 100% cotton face, perfect for DTG printing
- double-needle, cover-seamed armholes and waistband for durability
- two-ply hood with jersey lining & dyed-to-match drawcord
- covered zipper
- roomy front pockets
- imported



**F280**  
Ultimate Cotton® Full-Zip Fleece Hood  
S-3XL  
S-2XL: 2 dz/case  
3XL: 1 dz/case



**F170**  
Ultimate Cotton® Fleece Pullover Hood  
S-3XL  
S-2XL: 2 dz/case  
3XL: 1 dz/case



**F260**  
Ultimate Cotton® Fleece Sweatshirt  
S-3XL  
S-3XL: 2 dz/case

| F280 | F170 | F260 |                     |
|------|------|------|---------------------|
| •    | •    | •    | white WH            |
| •    | •    | •    | ash AS              |
| •    | •    | •    | light steel LW      |
| •    | •    | •    | oxford gray XY      |
| •    | •    | •    | charcoal heather HL |
| •    | •    | •    | black BK            |
| •    | •    | •    | dark chocolate DE   |
| •    | •    | •    | deep forest FO      |
| •    | •    | •    | light blue LB       |
| •    | •    | •    | deep royal RO       |
| •    | •    | •    | navy NY             |
| •    | •    | •    | deep red RE         |
| •    | •    | •    | maroon MR           |

\*light steel: 85% cotton/15% polyester  
charcoal heather: 65% cotton/35% polyester  
oxford gray: 65% cotton/35% polyester





COOL DRI®

The clear winner in moisture wicking and drying. Cool DRI® boasts a 50+ UPF rating, providing protection from UV rays and features odor reducing FreshIQ™ fabric treatment.



Moisture Wick

- 100% performance polyester, 4 oz. interlock fabric
- superior moisture wicking and drying time
- 50+ UPF rating, excellent protection against UV rays
- perfect for printing or sublimation
- tag-free neck label
- narrow ribbed collar and double-needle, cover-seamed neck
- double-needle sleeve and bottom hems
- imported



4820  
Cool DRI® Performance T-Shirt  
XS-3XL  
XS-XL: 3 dz/case  
2XL-3XL: 2 dz/case



4830  
Women's Cool DRI® Performance T-Shirt  
S-3XL  
S-XL: 3 dz/case  
2XL-3XL: 2 dz/case



483V  
Women's Cool DRI® Performance V-Neck T-Shirt  
S-3XL  
S-XL: 3 dz/case  
2XL-3XL: 2 dz/case



482L  
Cool DRI® Long Sleeve Performance T-Shirt  
XS-3XL  
XS-3XL: 3 dz/case



482Y  
Youth Cool DRI® Performance T-Shirt  
XS-XL  
XS-XL: 3 dz/case



FreshIQ® fabric treatment is an advanced odor protection technology that targets odor-causing agents thereby reducing unpleasant odors from your clothing.

|               | 4820 | 4830 | 483V | 482L | 482Y |                  |
|---------------|------|------|------|------|------|------------------|
| white         | •    | •    | •    | •    | •    | white WH         |
| graphite      | •    | •    | •    | •    | •    | graphite BQ      |
| black         | •    | •    | •    | •    | •    | black BK         |
| army brown    | •    | •    | •    | •    | •    | army brown LN    |
| gold          | •    | •    | •    | •    | •    | gold GO          |
| safety orange | •    | •    | •    | •    | •    | safety orange SH |
| safety green  | •    | •    | •    | •    | •    | safety green 82  |
| kelly green   | •    | •    | •    | •    | •    | kelly green KG   |
| deep forest   | •    | •    | •    | •    | •    | deep forest FO   |
| light blue    | •    | •    | •    | •    | •    | light blue LB    |
| deep royal    | •    | •    | •    | •    | •    | deep royal RO    |
| navy          | •    | •    | •    | •    | •    | navy NY          |
| purple        | •    | •    | •    | •    | •    | purple PR        |
| wow pink      | •    | •    | •    | •    | •    | wow pink 6A      |
| deep red      | •    | •    | •    | •    | •    | deep red RE      |
| maroon        | •    | •    | •    | •    | •    | maroon MR        |





# POLOS

Comfort with a collar for any occasion. Designed for a variety of embellishment techniques.



Moisture  
Wick

**Cool DRI®**

- 100% polyester, rapid-dry 4 oz. interlock fabric
- superior moisture wicking and drying time
- 50+ UPF rating, excellent UV protection
- perfect for printing or sublimation
- tag-free neck label
- stylish, three-button placket and welt collar
- double-needle sleeve and bottom hems
- imported

**X-TEMP®**

**42XO & 43XO**

- 5.4 oz. 60% ring spun cotton/40% polyester\*
- 40+ UPF rating, excellent UV protection
- moisture wicking with dynamic vapor control designed to adjust to body temperature for all-day comfort
- tag-free neck label
- stylish, three-button placket and welt collar
- imported

**055P & 035P**

- 6.5 oz. 65% polyester/35% cotton pique
- 40+ UPF rating, excellent UV protection
- adaptive finish with FreshIQ® odor control technology
- tag-free neck label
- double-needle hem sleeves
- imported



**054X**  
EcoSmart® Jersey Polo Shirt  
Check out more of our earth friendly polos on page 30.



**4800**  
Men's Cool DRI® Polo Shirt  
S-3XL  
S-3XL: 3 dz/case



**480W**  
Women's Cool DRI® Polo Shirt  
S-3XL  
S-3XL: 3 dz/case



**42XO**  
Men's X-TEMP® Polo Shirt  
S-3XL  
S-3XL: 3 dz/case



**43XO**  
Women's X-TEMP® Polo Shirt  
S-3XL  
S-3XL: 3 dz/case



**055P**  
Men's X-TEMP® Pique Polo Shirt  
S-6XL  
S-6XL: 3 dz/case



**035P**  
Women's X-TEMP® Pique Polo Shirt  
S-3XL  
S-3XL: 3 dz/case

|      |      |      |      |      |      |                      |
|------|------|------|------|------|------|----------------------|
| 4800 | 480W | 42XO | 43XO | 055P | 035P | white WH             |
| •    | •    | •    | •    | 6X   | •    | light steel/LW       |
| •    | •    | •    | •    | 6X   | •    | charcoal heather HL  |
| •    | •    | •    | •    | 6X   | •    | graphite BQ          |
| •    | •    | •    | •    | •    | 6X   | black BK             |
| •    | •    | •    | •    | •    | •    | clean mint CM        |
| •    | •    | •    | •    | •    | •    | deep forest FO       |
| •    | •    | •    | •    | •    | •    | blue horizon AF      |
| •    | •    | •    | •    | •    | •    | neon blue heather NX |
| •    | •    | •    | •    | •    | •    | deep royal RO        |
| •    | •    | •    | •    | 6X   | •    | navy NY              |
| •    | •    | •    | •    | •    | •    | wow pink 6A          |
| •    | •    | •    | •    | •    | •    | deep red RE          |





# Making apparel responsibly

Our mission is to be the apparel industry's leader in social responsibility and environmental stewardship. We take great pride in our strong reputation for ethical business practices and the success of our Hanes for Good corporate responsibility program, which includes an intense focus on workplace quality, environmental stewardship, community building and governance.

Hanes for Good is providing free medical care, including 6,300 consultations and 1,100 life-changing surgeries, for both our employees and the communities where we operate in the Dominican Republic.



## MAKING T-SHIRTS RESPONSIBLY

From farm and production to consumer and repurposing

### A Commitment to Environmental and Social Responsibility

80% of our products are made in Hanes-owned facilities or through our dedicated contractors - giving us the oversight to ensure our clothes are manufactured in an environmentally and socially responsible way.

### Water-Wise U.S. Cotton

Most of our cotton is grown in the rain-rich states of the Southeast U.S., which provides enough natural water and eliminates the need for irrigation.

### Low-Waste Yarn Spinning

We ensure our t-shirt yarn is produced by environmentally responsible suppliers in energy-efficient facilities that minimize waste, and we're expanding our use of recycled and sustainable materials.

### Using Renewable Energy

Much of the energy we use making t-shirts in the Western Hemisphere is biomass, hydro and geothermal, helping us avoid coal and oil.

### Socially Active Employees

Across the globe, our employees help us further our eco-friendly business operations. They are also active in a unique philanthropic effort that pairs energy reduction savings and proceeds from recycling to fund community improvement. Since 2010, employees have donated nearly 500,000 hours to projects such as school and hospital upgrades, with \$2.5 million in company funding.

### Reducing Carbon Emissions

We have reduced our carbon emissions from material and product transportation and distribution by over 50% since 2008 through the use of ocean shipping and rail services over trucking.

### New Life

Hanes continues to explore ways to recycle and repurpose apparel to keep discarded clothes out of landfills.

### Consumer

The majority of a cotton t-shirt's carbon footprint comes after it's sold. All Hanes printwear is cold water wash, greatly reducing energy used in cleaning.



We're a 10-time winner of the EPA Energy Star Award and proud to be the only apparel company to earn sustained excellence honors in the program's 27-year history.







# Buy Hanes products and support local education.

Simply order Hanes®, Champion®, Alternative® and ComfortWash™ printed t-shirts, polo shirts, shorts, sweatshirts and sweatpants from your favorite supplier and earn cash for your K-12 school (\$0.10 per piece). Products purchased at retail are not eligible for this offer.

**More than one million dollars has been given back to education to date.**



**STEP 1:** Order Hanes printed shirts and earn a cash rebate for a school of your choice.



**STEP 2:** Complete the online rebate form and upload a copy of your invoice/receipt and submit.



**STEP 3:** In 4-6 weeks, check your email for confirmation from [info@hanes4education.com](mailto:info@hanes4education.com)

For more information and redemption guidelines, visit [Hanes4Education.com](https://hanes4education.com)





Hanes®

20  
20

[HanesLocator.com](http://HanesLocator.com)